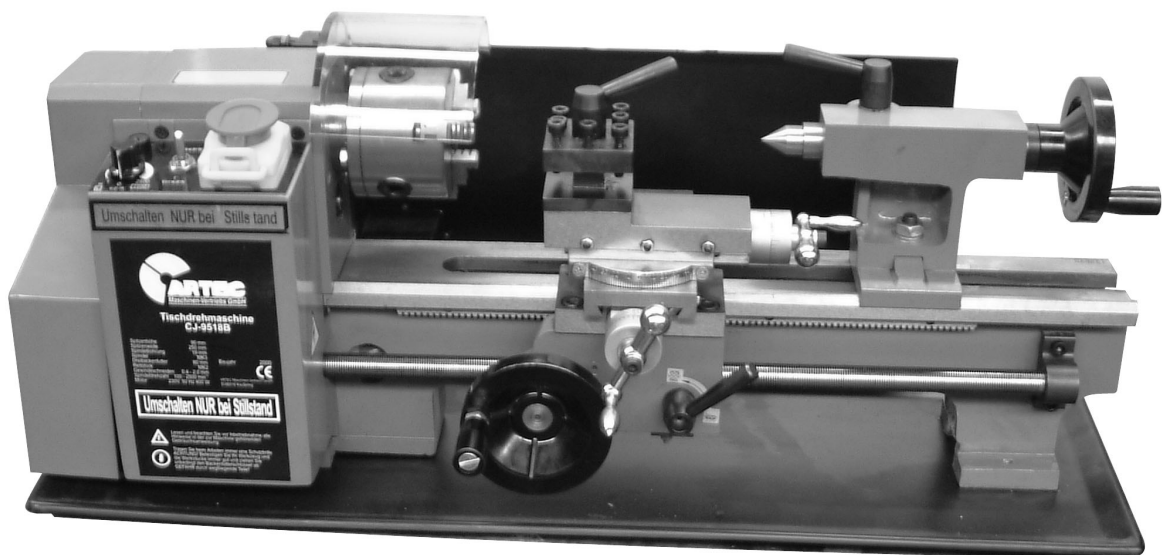


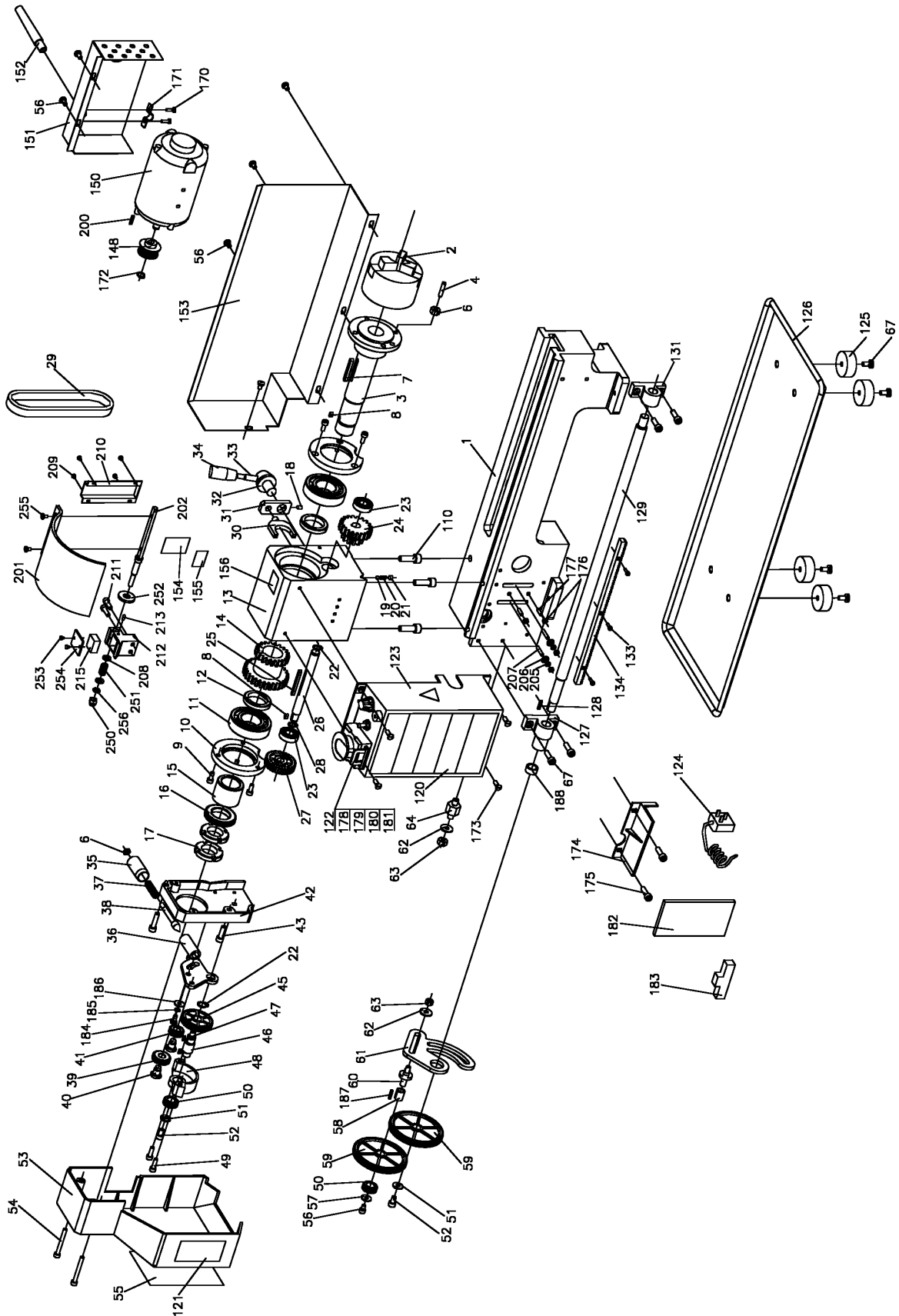
Bedienungsanleitung

Leitspindeldrehmaschine

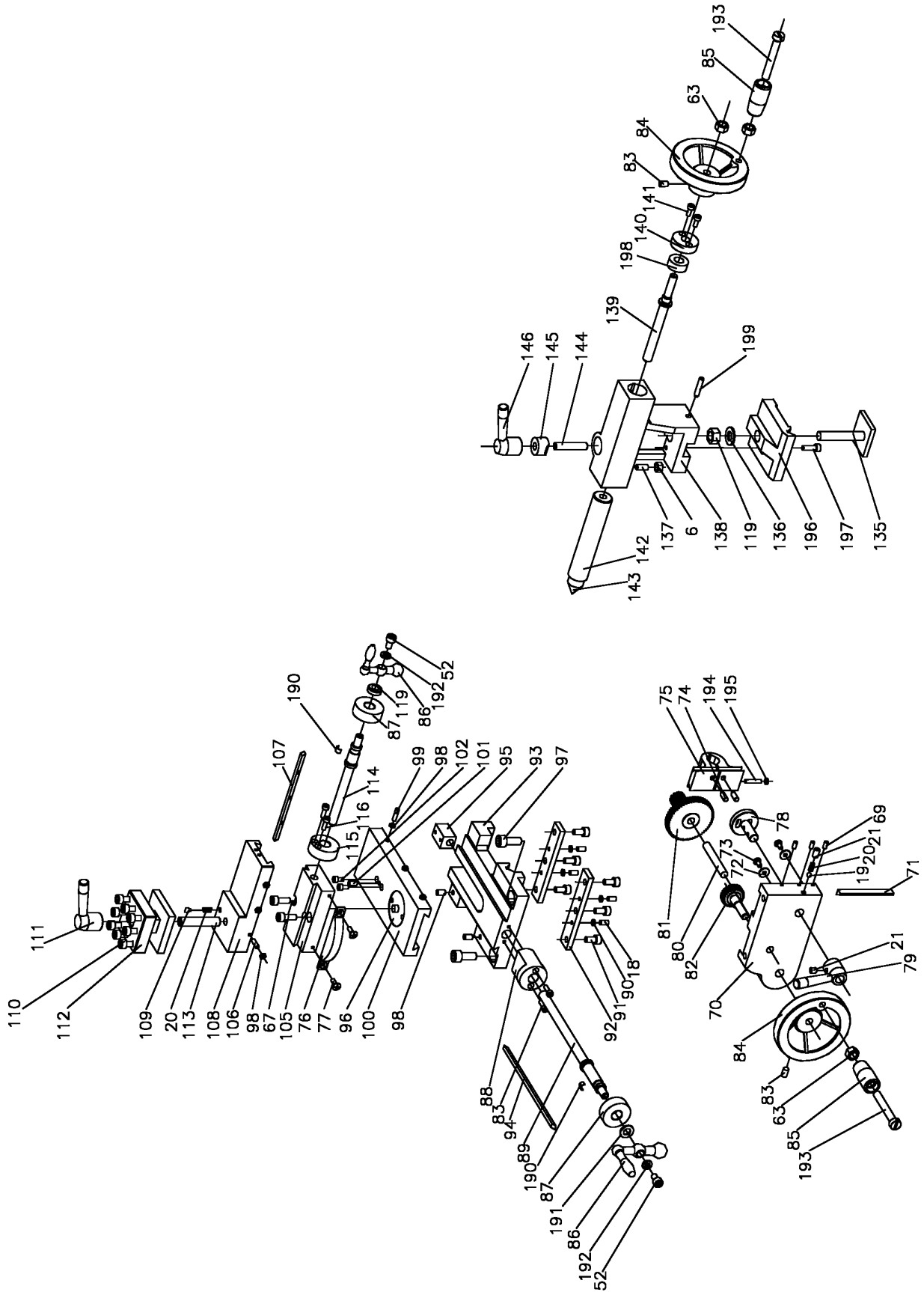


C2

Ersatzteilliste C2



Ersatzteilliste C2



Ersatzteilliste C2

Pos.	Description	Qt'y	Pos.	Description	Qt'y	Pos.	Description	Qt'y
1	Bed Way	1	47	Parallel Key 4 × 8	1	94	Gib Strip	1
2	3 Jaws Chuck	1	48	Mount	1	95	Feeding Nut	1
3	Spindle	1	49	Screw M5 × 18	2	96	Swivel Disk	1
4	Screw M6 × 25	3	50	Pinion 20T	2	97	Screw M8 × 20	6
6	Nut M6	5	51	Washer M6	4	98	Nut M4	6
7	Key M5 × 40	1	52	Screw M6 × 8	2	99	Screw M4 × 16	3
8	Key M4 × 8	2	53	Cover	1	100	Cross Slide	1
9	Screw M5 × 12	6	54	Screw M5 × 45	2	101	Screw M5 × 10	2
10	Cover	2	55	Threads Cutting Chart	1	102	Screw M4 × 8	1
11	Ball Bearing 80206	2	56	Screw M5 × 8	8	105	Compound Rest (B)	2
12	Spacer	1	57	Washer M4	2	106	Screw M4 × 14	3
13	Head Stock Casting	1	58	Bush W/Key	1	107	Gib Strip	1
14	H/L Gear 21T/29T	1	59	Gear 80T	2	108	Compound Rest (A)	1
15	Spacer	1	60	Shaft	1	109	Positioning Pin	1
16	Spur Gear 45T	1	61	Support Plate	1	110	Screw M6 × 25	8
17	Nut M27 × 1.5	1	62	Washer M8	3	111	Clamping Lever	1
18	Set Screw M5 × 8	1	63	Nut M8	3	112	Tool Rest	1
19	Steel Ball Ø5	2	64	Shaft	1	113	Stud M10 × 65	1
20	Compression Spring Ø4.9× 93	3	67	Screw M5 × 16	8	114	Cross Feeding Screw	1
21	Set Screw M6 × 6	3	69	Set Screw M4 × 10	3	115	Bracket	1
22	Retaining Ring M12	2	70	Apron	1	116	Screw M4 × 12	2
23	Ball Bearings	2	71	Gib Strip	1	119	Nut M18	2
24	H/L Gear 12T/20T	1	72	Washer	2	120	Model Label	1
25	Parallel Key M4 × 45	1	73	Screw M4 × 8	2	121	Indicator Table Label	1
26	H/L Gear Shaft	1	74	Shaft	2	122	Switch Label	1
27	Pulley	1	75	Half Nut	2	123	Control Box	1
28	Retaining Ring M10	2	76	Angle Block	1	124	Plug W/Cord	1
29	Timing Belt L × 136	1	77	Screw M4 × 10	2	125	Rubber Foot	4
30	Shifting Fork	1	78	Groove Cam	1	126	Chip Tray	1
31	Shifting Arm	1	79	Handle	1	127	Bracket	1
32	Shifting Knob	1	80	Shaft	1	128	Key M3 × 16	1
33	Shifting Lever	1	81	Feeding Gear (A) 11T/54T	1	129	Lead Screw	1
34	Shifting Grip	1	82	Feeding Gear (B) 24T	1	131	Bracket	1
35	Handle	1	83	Screw M 6 × 10	4	133	Screw M3 × 10	3
36	Handle Mount	1	84	Wheel	2	134	Rack	1
37	Spring	1	85	Knob+Screw M8×55+Nut M8 2	2	135	Clamp Plate	1
38	Indicator	1	86	Handle big	1	136	Washer M10	1
39	Pinion 25T	1		Handle small	1	137	Screw M5 × 16	1
40	Support Screw	2	87	Dial	2	138	Tailstock Casting	1
41	Pinion 20T	1	88	Bracket	1	139	Tailstock Screw	1
42	Fixed Cover	1	89	Feeding Screw	1	140	Bracket	1
43	Screw M6 × 20	2	90	Nut M5	4	141	Screw M4 × 10	2
44	Screw M5 × 8	1	91	Screw M6 × 12	6	142	Tailstock Quilt	1
45	Gear 45T	1	92	Slide Plate	2	143	Center	1
46	Shaft	1	93	Saddle	1	144	Stud M8 × 40	1

Ersatzteilliste C2

Pos.	Description	Qt'y	Pos.	2Description	Qt'y
145	Clamp	1	197	Screw M5x16	1Pos.
146	Handle	1	198	Ring	1
148	Pulley	1	199	Screw M5x25	1
150	Motor	1	200	Key 3x12	1
151	Cover	1	201	Chuck guard	1
152	Rubber Pipe	1	202	Shaft	1
153	Rear Splash Guard	1	205	Spring washer 6	2
154	F/N/R Label	1	206	Big Washer 6	2
155	H/L Label	1	207	Screw M6x25	2
156	Warning Label	1	208	Flat washer 6	2
157	Gear 30T	1	209	Screw M3x4	4
158	Gear 35T	1	210	Cover of switch	1
159	Gear 40T	2	211	Screw M5x16	2
160	Gear 45T	1	212	Block	1
161	Gear 50T	1	213	Pin	1
162	Gear 55T	1	215	Microswitch	1
163	Gear 57T	1	250	Screw M6x25	1
164	Gear 60T	1	251	Pressed sping	1
165	Gear 65T	1	252	Spinner	1
170	Screw M3 × 5	1	253	Screw ST2.9x4.5	2
171	Clamp Blook	1	254	Cover	1
172	Check Ring Ø9	1	255	Screw M4x8	2
173	Screw M5 × 10	4	256	Thin nut M6	1
174	Protector	1			
175	Screw M5 × 10	2			
176	Nut M6	4			
177	Screw M6 × 25	2			
178	Emergency stop switch	1			
179	Fuse Box	1			
180	Variable Speed Control Knob	1			
181	F/O/R Switch	1			
182	PC Board	1			
183	Filter	1			
184	Screw M5x10	1			
185	Spring washer 5	1			
186	Washer 5	2			
187	Key 3X16	1			
188	Small Spacer	1			
190	Spring	2			
191	Washer 8	1			
192	Sping Washer 6	2			
193	Screw M 8x55	2			
194	Screw M 4x38	1			
195	Nut M4	1			
196	Plate of tailstock	1			

ARTEC

Maschinen-Vertriebs GmbH
Hauswiesenstraße 24
86916 Kaufering

Tel.: 08191 - 65461

Fax: 08191 - 65464