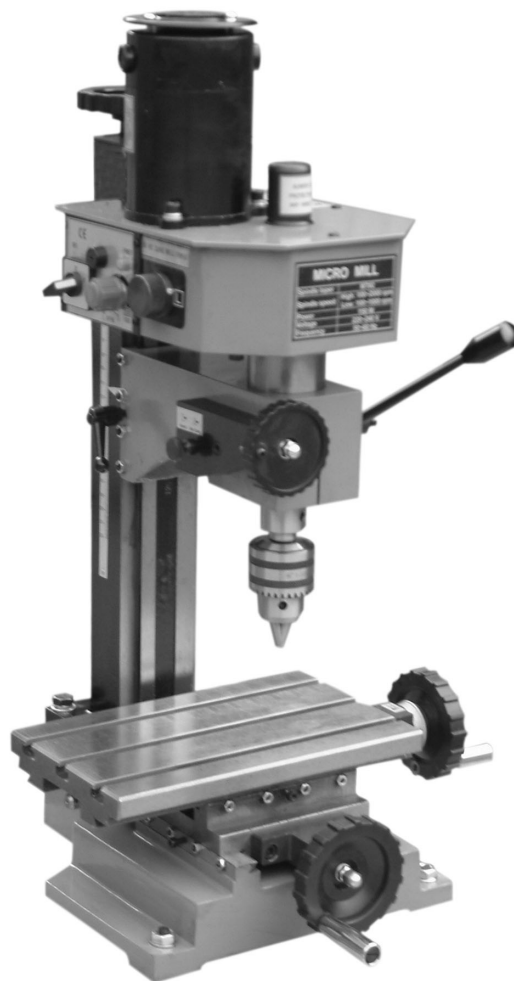


Bedienungsanleitung

Mikro - Bohr- und Fräsmaschine



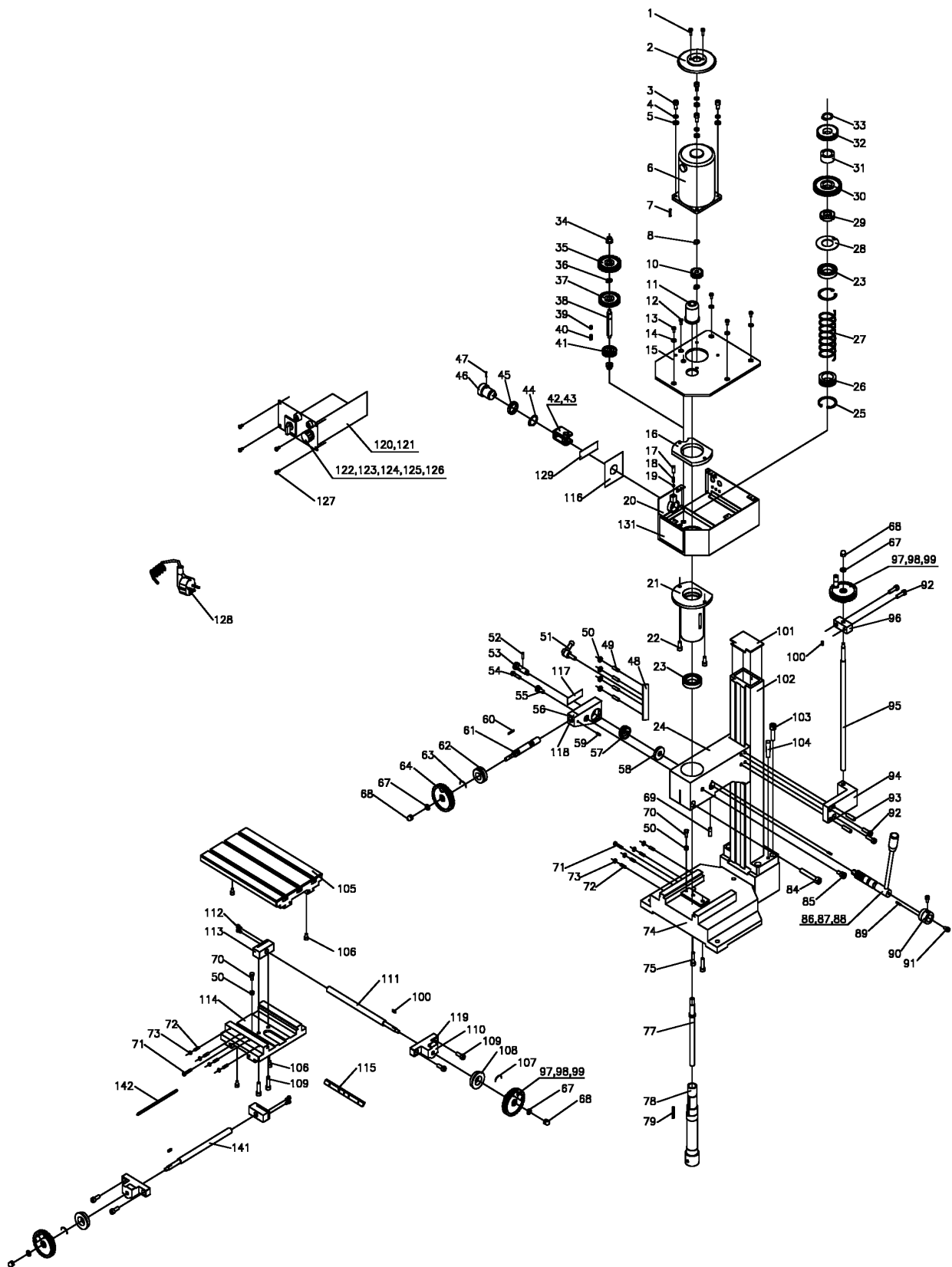
X1

Ersatzteilliste X1

Ersatzteilliste X1

Part no	Description	Number	Part no	Description	Number	Part no	Description	Number
1	Screw M4*12	2	55	Joint screw	1	115	Wedge	1
2	Protect cover for motor	1	56	Worm base	1	116	Change speed label	1
3	Screw M6*12	3	57	Helical gear	1	117	Joint label	1
4	Spring washer 6	3	58	Spacer	1	118	0 position label	2
5	Washer 6	3	59	Pin 3*18	1	119	Dial label	1
6	Motor	1	60	Key 2*18	1	120	Electricity box	1
7	Round key 3*16	1	61	Worm shaft	1	121	PC Board	1
8	Check ring for shaft 8	2	62	Dial	1	122	Variable speed knob	1
10	Motor gear	1	63	Damp spring	1	123	Fuse box	1
11	Safety cover	1	64	Hand wheel	1	124	Power indicating lamp(green)	1
12	Screw M4*6	1	67	Washer 6	4	125	Forward/reverse Switch	1
13	Screw M4*8	4	68	Top nut M6	4	126	Electricity label	1
14	Washer 4	4	69	Screw M6*20	1	127	Screw ST2.9*6.5	4
15	Up cover	1	70	Bolt M5*12	2	128	Power cord/plug	1
16	Sleeve support plate	1	71	Screw M4*20	2	129	Caution label	1
17	Screw M6*5	1	72	Screw M4*18	8	131	Technical parameter label	1
18	Compression spring	1	73	Nut M4	8	132	chuck	1
19	Steel ball 5	1	74	Base	1	133	L Hex. Wrench S:3, 6	1
20	Gear-box	1	75	Screw M6*25	2	134	Double end wrench: 5.5*7, 8*10	1
21	Spindle sleeve	1	77	Draw bar	1	135	Socket head wrench D38-42	1
22	Screw M6*14	2	78	Spindle	1	136	Oil can	1
23	Bearing 61905-2Z	2	79	Key 4*28	1	137	Fuse	1
24	Spindle box	1	84	Screw M8*50	1	138	Taper shank	1
25	Check ring for hole 38	2	85	Fix screw	1	139	Chuck key	1
26	Spring seat ring	1	86	Gear shaft	1	140	T - nut	4
27	Compression spring	1	87	Handle shaft	1	141	Leadscrew	1
28	Round nut stop gasket	1	88	Long handle sleeve	1	142	Wedge	1
29	Round nut M24*1.5	1	89	Spring pin 3*12	2			
30	Spindle gear	1	90	Mark shoe sleeve	1			
31	Spacer	1	91	Screw M5*8	2			
32	Spindle gear	1	92	Screw M6*20	4			
33	Check ring for shaft 20	1	93	Pin 6*26	2			
34	Powder metallurgy bearing	2	94	Nut block	1			
35	gear	1	95	Lifting Screw	1			
36	Check ring for shaft 10	1	96	Screw support	1			
37	Change gear	1	97	Hand wheel	3			
38	Shift shaft	1	98	Handle blot	3			
39	Key 4*8	1	99	Handle sleeve	3			
40	Key 4*12	1	100	Pin 3*10	3			
41	Change gear	1	101	Cover board	1			
42	Dila fork	1	102	Fuselage	1			
43	Flange lining	2	103	Screw M8*30	4			
44	Check ring 21	1	104	Pin 8*40	2			
45	Spacer	1	105	Worktable	1			
46	High/Low speed knob	1	106	Screw M5*6	4			
47	Spring pin 2*12	1	107	Damp spring	2			
48	Wedge	1	108	Dial	2			
49	Screw M5*8	4	109	Screw M6*16	4			
50	Nut M5	6	110	Screw base	2			
51	Handle	1	111	Lengthways Screw	1			
52	Pin 3*12	1	112	Screw M4*8	4			
53	Joint shaft	1	113	Screw nut	2			
54	Screw M5*18	1	114	Saddle	1			

Ersatzteilliste X1

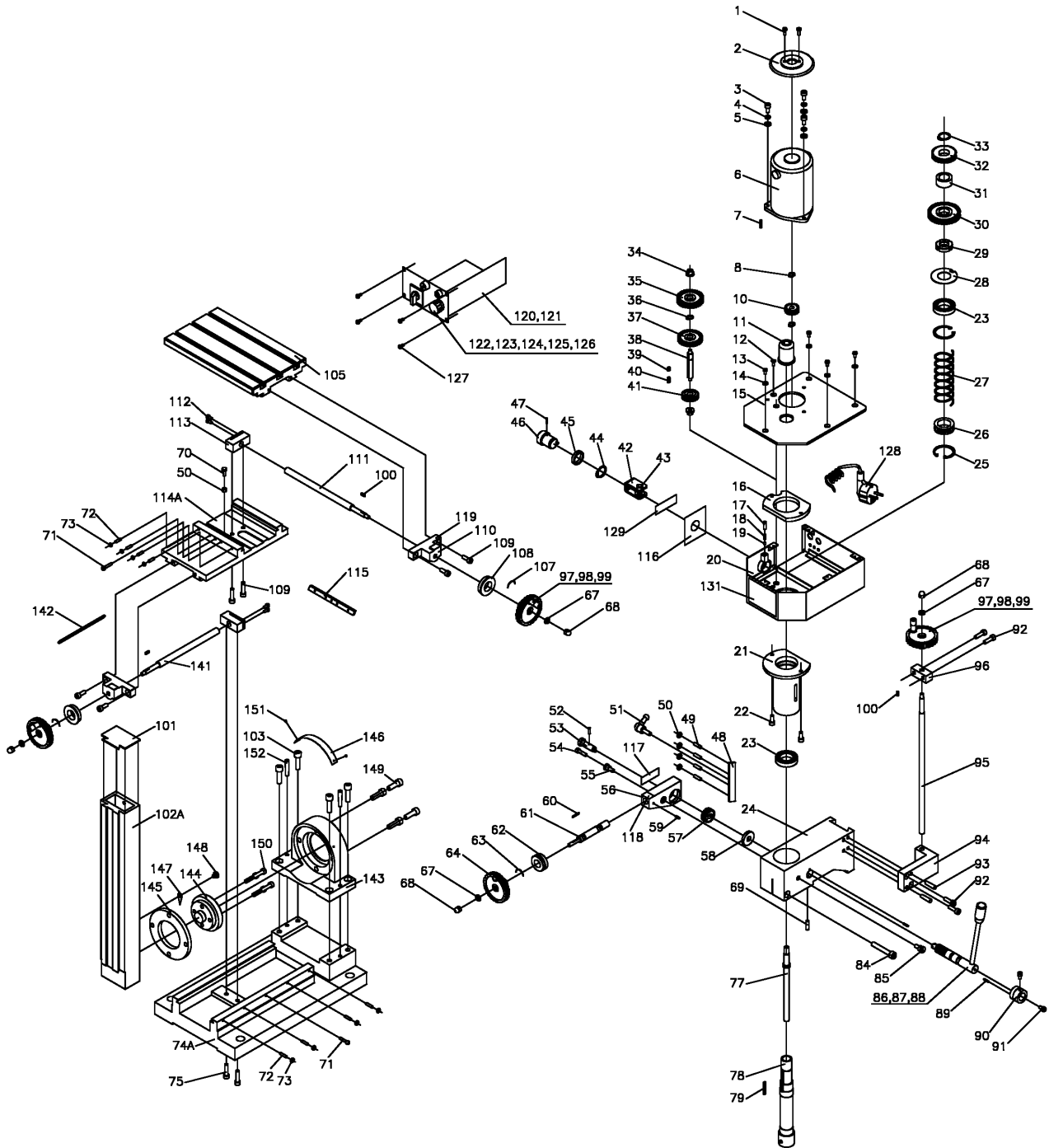


Ersatzteilliste X1

Ersatzteilliste X1 Super

Part no.	Description	Number	Part no.	Description	Number	Part no.	Description	Number
1	Screw M4*12	2	55	Joint screw	1	117	Joint label	1
2	Protect cover for motor	1	56	Worm base	1	118	0 position label	2
3	Screw M6*12	3	57	Helical gear	1	119	Dial label	1
4	Spring washer 6	3	58	Spacer	1	120	Electricity box	1
5	Washer 6	3	59	Pin 3*18	1	121	PC Board	1
6	Motor	1	60	Key 2*18	1	122	Variable speed knob	1
7	Round key 3*16	1	61	Worm shaft	1	123	Fuse box	1
8	Check ring for shaft 8	2	62	Dial	1	124	Power indicating lamp(green)	1
10	Motor gear	1	63	Damp spring	1	125	Forward/reverse Switch	1
11	Safety cover	1	64	Hand wheel	1	126	Electricity label	1
12	Screw M4*6	1	67	Washer 6	4	127	Screw ST2.9*6.5	4
13	Screw M4*8	4	68	Top nut M6	4	128	Power cord/plug	1
14	Washer 4	4	69	Screw M6*20	1	129	Caution label	1
15	Up cover	1	70	Bolt M5*12	2	131	Technical parameter label	1
16	Sleeve support plate	1	71	Screw M4*20	2	132	chuck	1
17	Screw M6*5	1	72	Screw M4*18	8	133	L Hex. Wrench S:3, 6	1
18	Compression spring	1	73	Nut M4	8	134	Double end wrench:	
19	Steel ball 5	1	74A	Base	1		5.5*7, 8*10	1
20	Gear-box	1	75	Screw M6*25	2	135	Socket head wrench D38-42	1
21	Spindle sleeve	1	77	Draw bar	1	136	Oil can	1
22	Screw M6*14	2	78	Spindle	1	137	Fuse	1
23	Bearing 61905-2Z	2	79	Key 4*28	1	138	Taper shank	1
24	Spindle box seat	1	84	Screw M8*50	1	139	Chuck key	1
25	Check ring for hole 38	2	85	Fix screw	1	140	T - nut	4
26	Spring seat ring	1	86	Gear shaft	1	141	Leadscrew	1
27	Compression spring	1	87	Handle shaft	1	142	Wedge	1
28	Round nut stop gasket	1	88	Long handle sleeve	1	143	Support for connecting flange	1
29	Round nut M24*1.5	1	89	Spring pin 3*12	2	144	Connecting flang	1
30	Spindle gear	1	90	Mark shoe sleeve	1	145	Plate	1
31	Spacer	1	91	Screw M5*8	2	146	Ruler	1
32	Spindle gear	1	92	Screw M6*20	4	147	Pointer	1
33	Check ring for shaft 20	1	93	Pin 6*26	2	148	Screw M6X6	1
34	Powder metallurgy bearing	2	94	Nut block	1	149	Screw M8x25	4
35	gear	1	95	Lifting Screw	1	150	Screw M6 x 25	4
36	Check ring for shaft 10	1	96	Screw support	1	151	Rivet	2
37	Change gear	1	97	Hand wheel	3	152	Taper shank 6x35	2
38	Shift shaft	1	98	Handle blot	3			
39	Key 4*8	1	99	Handle sleeve	3			
40	Key 4*12	1	100	Pin 3*10	3			
41	Change gear	1	101	Cover board	1			
42	Dila fork	1	102A	Fuselage	1			
43	Flange lining	2	103	Screw M8*30	4			
44	Check ring 21	1	105	Worktable	1			
45	Spacer	1	107	Damp spring	2			
46	High/Low speed knob	1	108	Dial	2			
47	Spring pin 2*12	1	109	Screw M6*16	4			
48	Wedge	1	110	Screw base	2			
49	Screw M5*8	4	111	Lengthways Screw	1			
50	Nut M5	6	112	Screw M4*8	4			
51	Handle	1	113	Screw nut	2			
52	Pin 3*12	1	114A	Saddle	1			
53	Joint shaft	1	115	Wedge	1			
54	Screw M5*18	1	116	Change speed label	1			

Ersatzteilliste X1



ARTEC
Maschinen-Vertriebs GmbH
Hauswiesenstraße 24
86916 Kaufering

Tel. 08191 - 65461
Fax: 08191 - 65464
e-mail: info@ar-tec.de