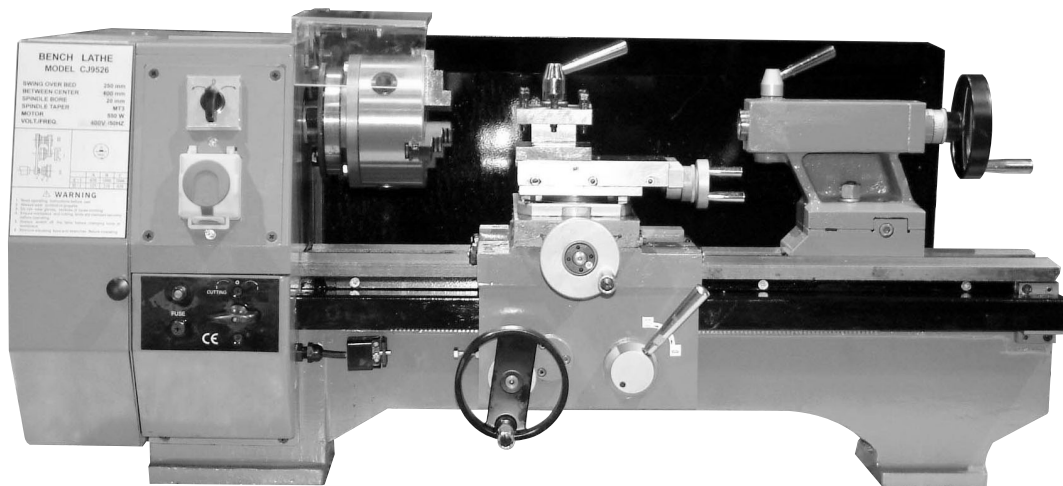

Ersatzteilliste

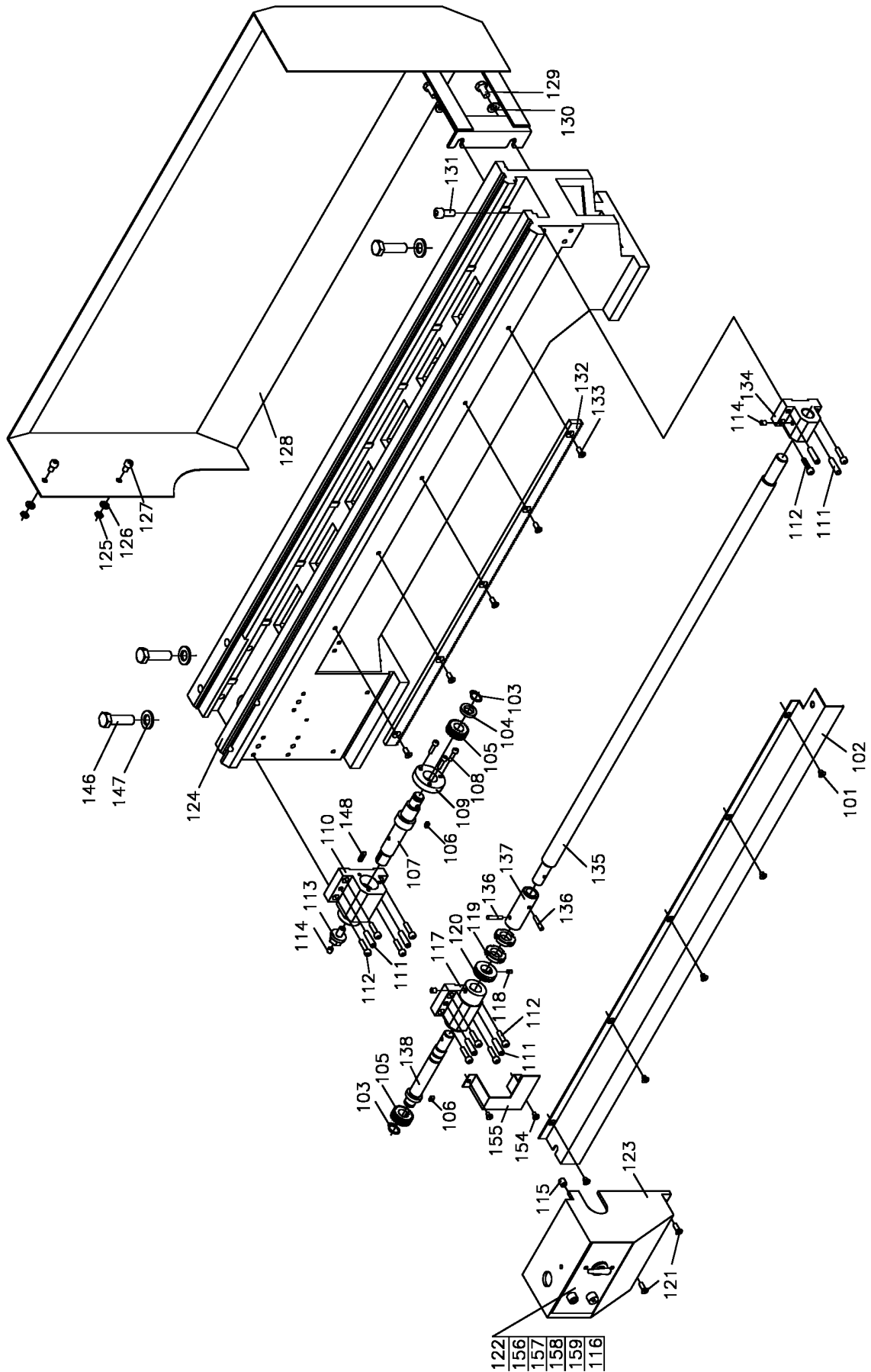
Leitspindeldrehmaschine



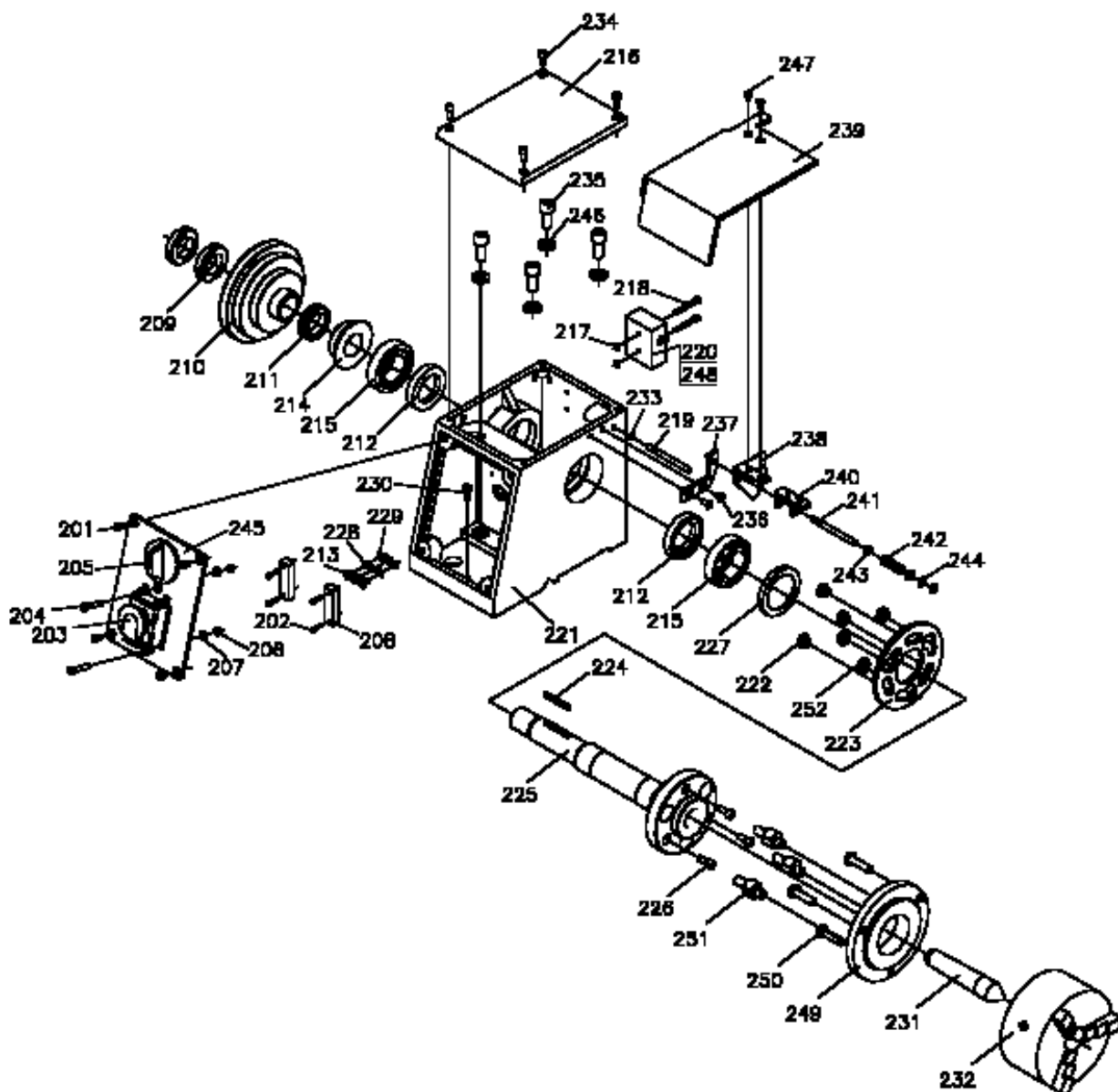
C-6 400, 230 Volt
C-6 550, 230 Volt

C-6 400, 400 Volt
C-6 550, 400 Volt

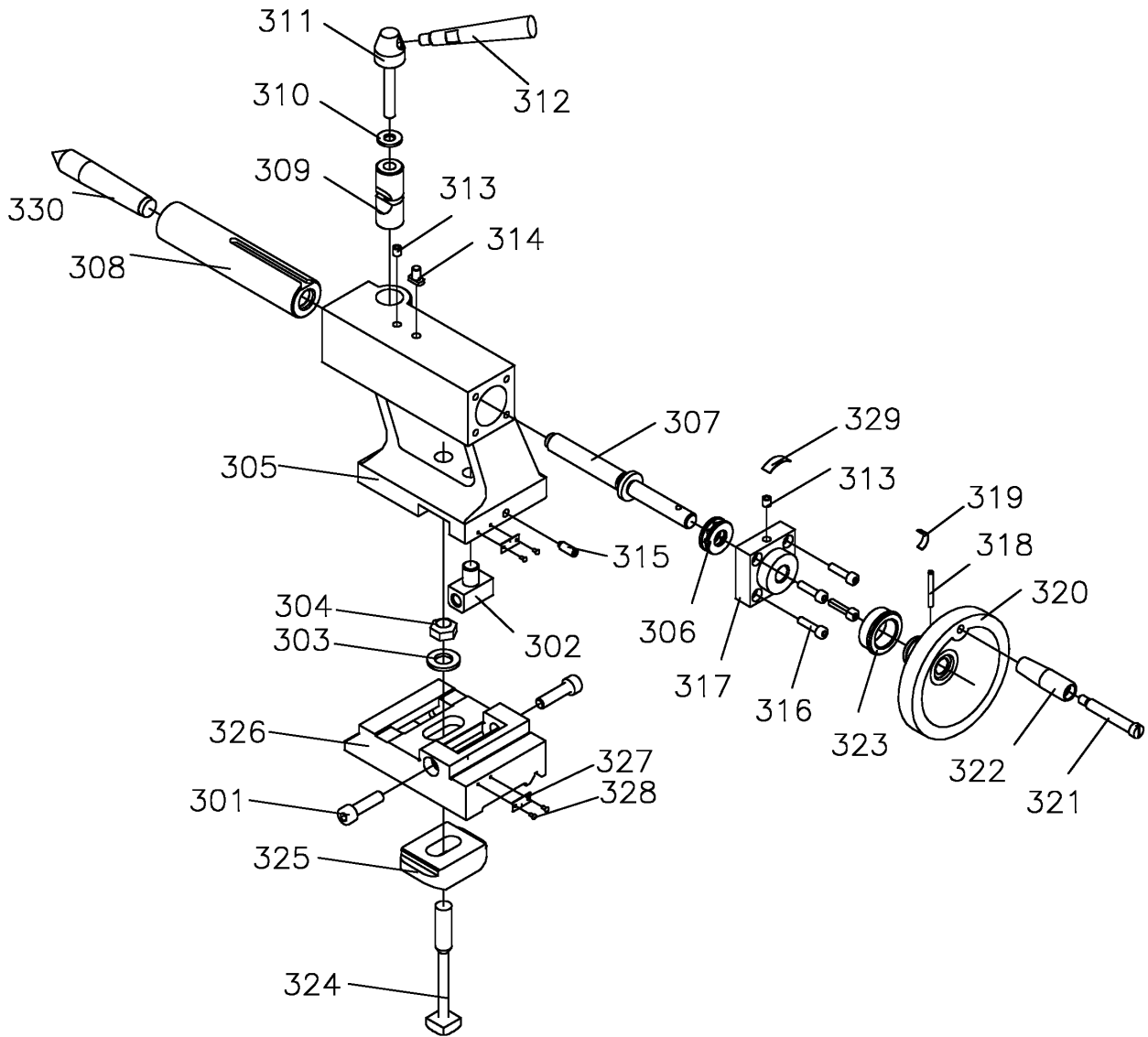
Ersatzteilliste C6



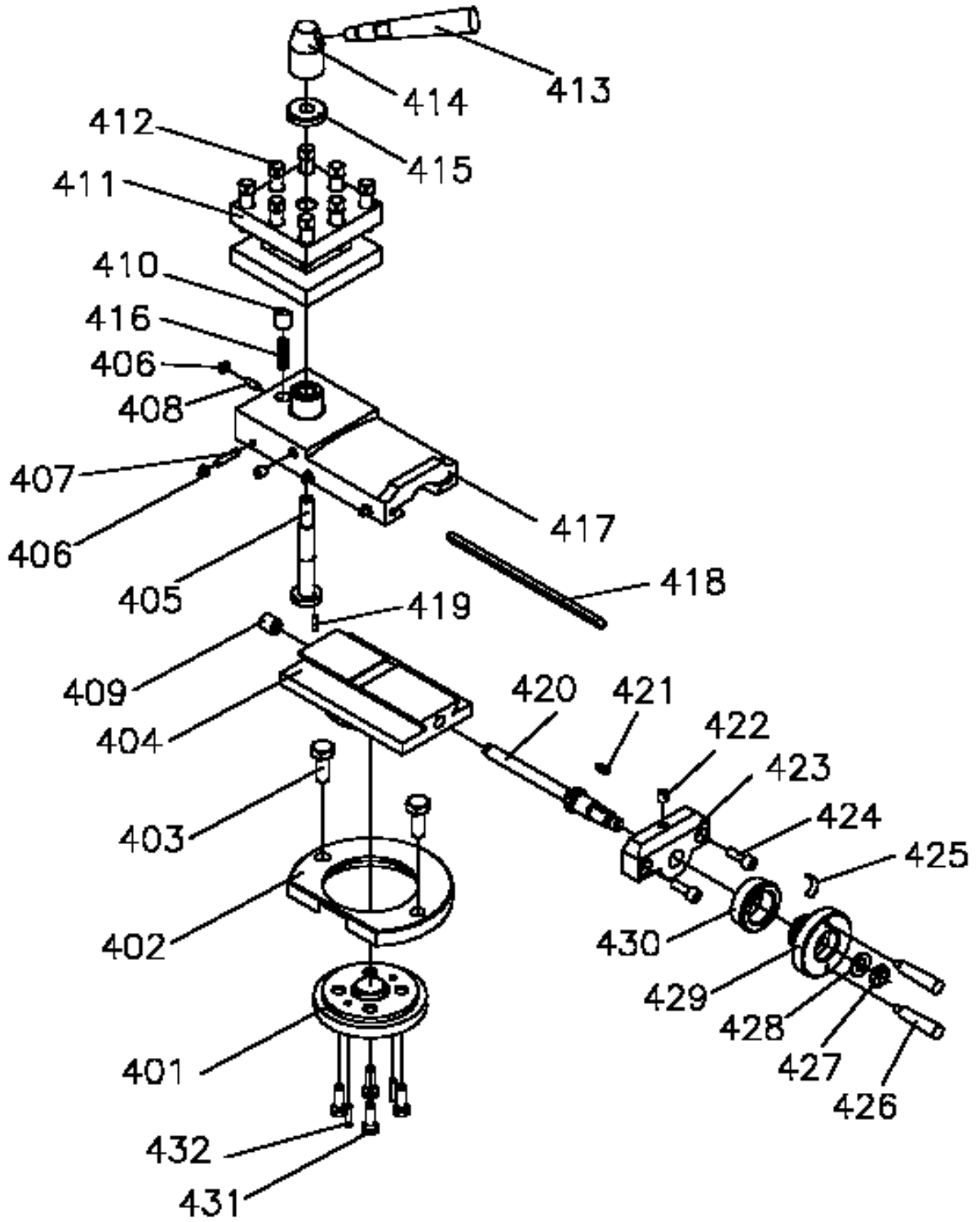
Ersatzteilliste C6



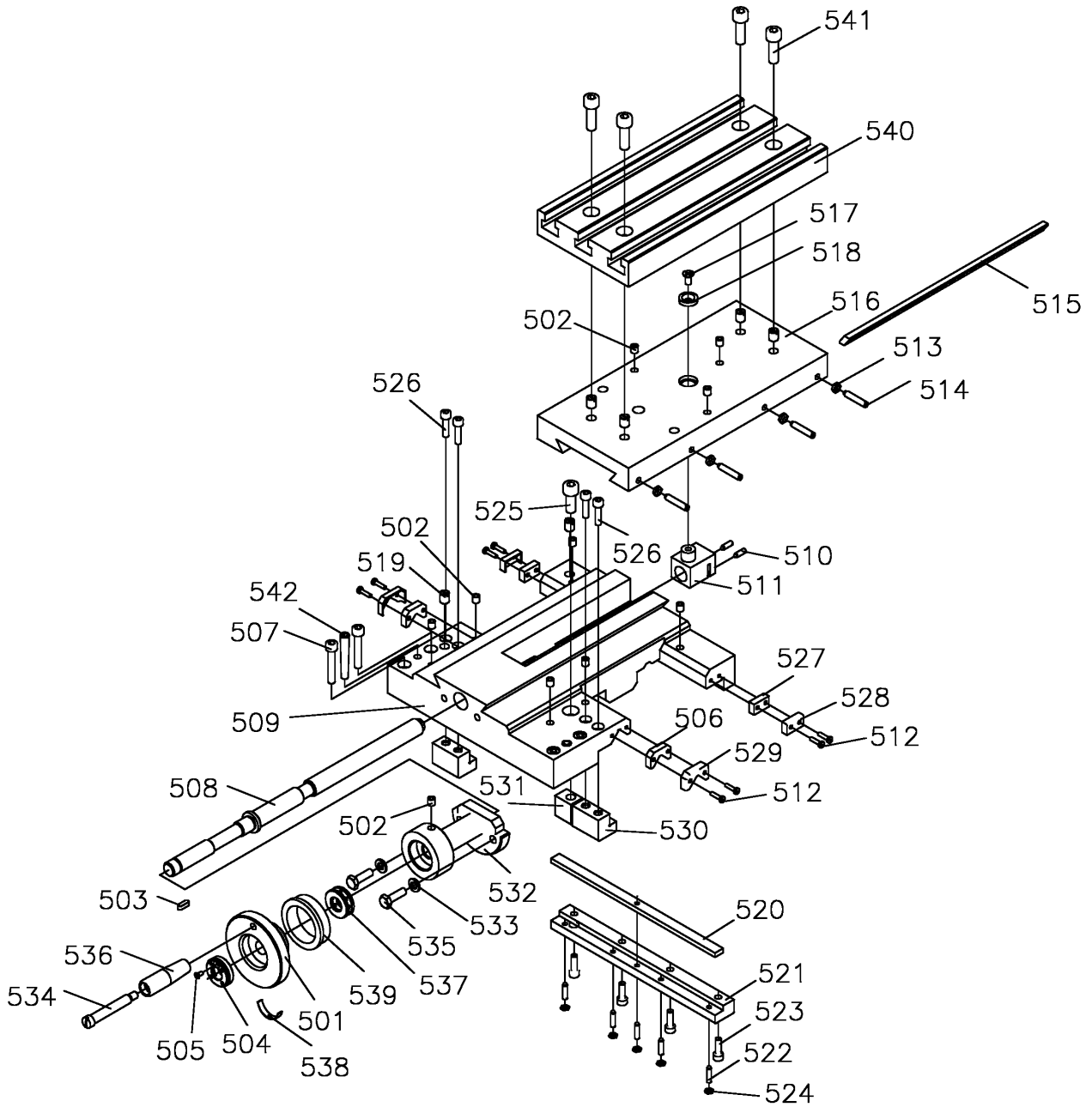
Ersatzteilliste C6



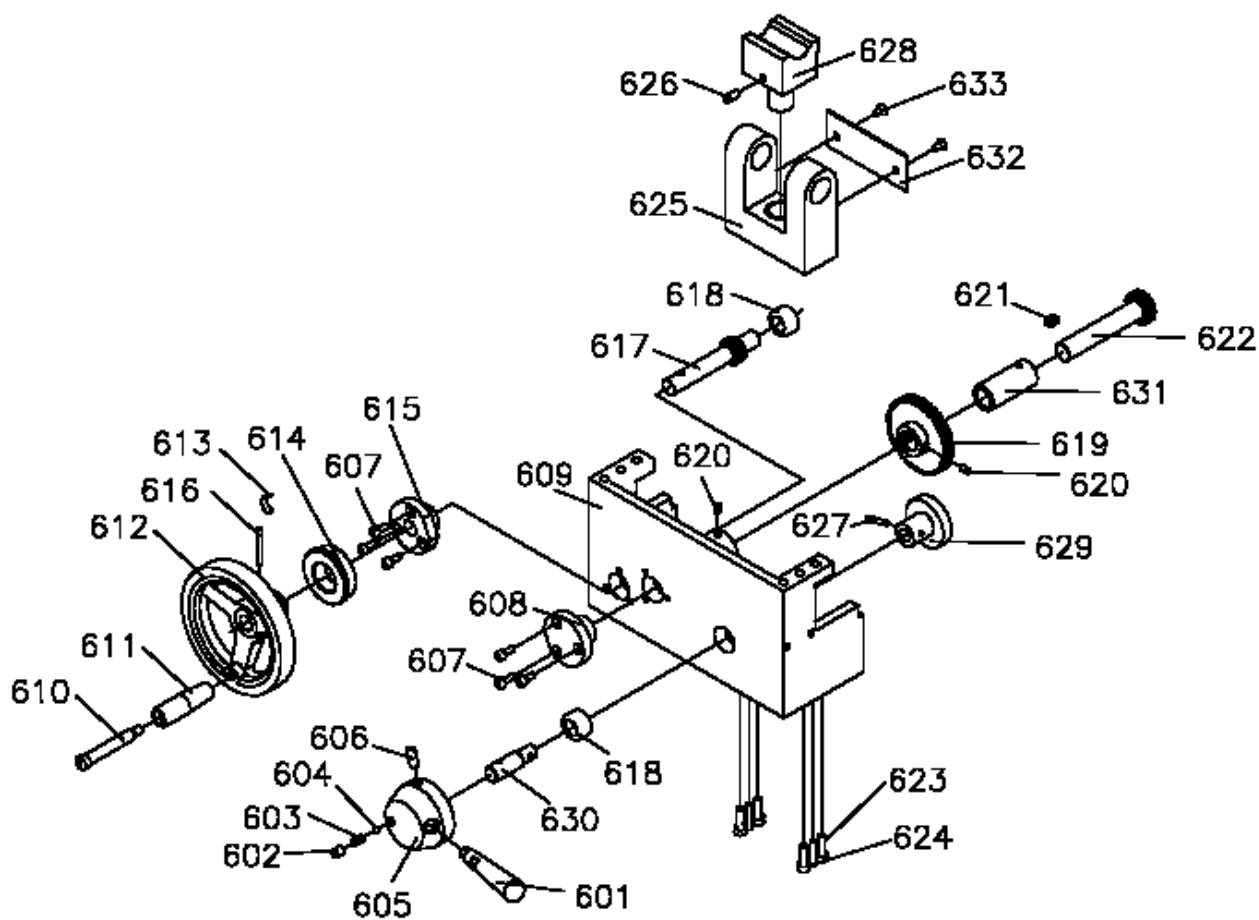
Ersatzteilliste C6



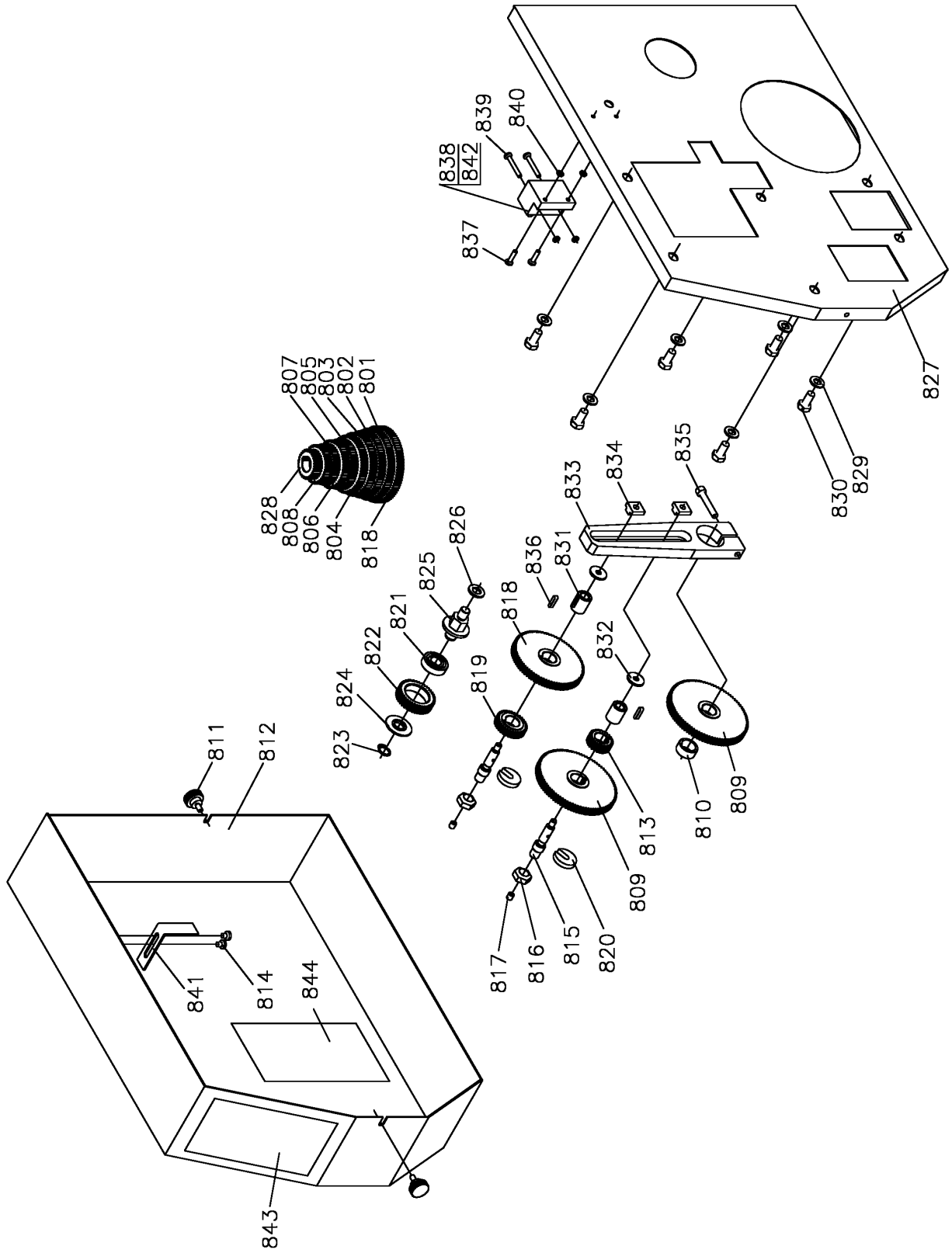
Ersatzteilliste C6



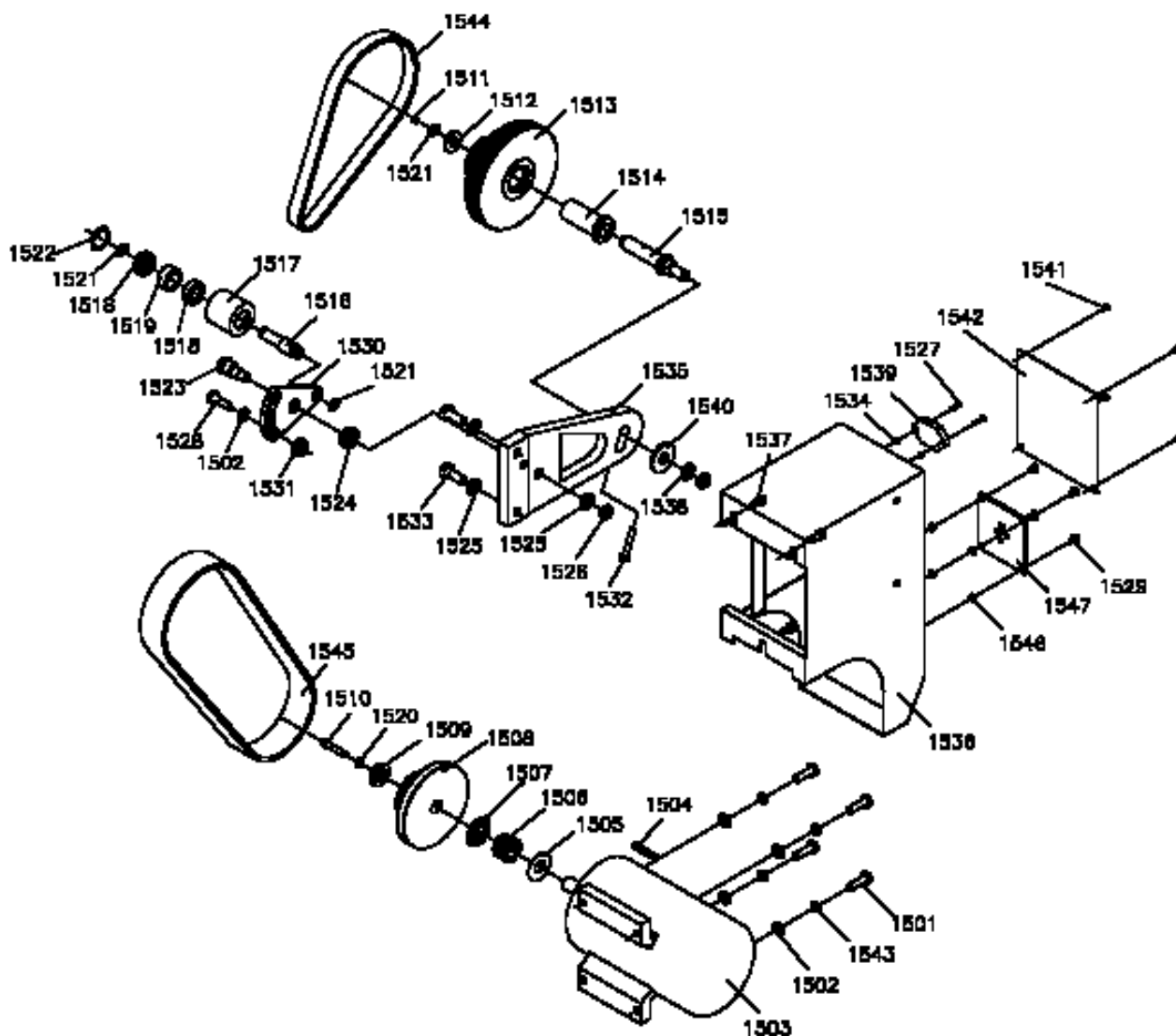
Ersatzteilliste C6



Ersatzteilliste C6



Ersatzteilliste C6



Ersatzteilliste C6

| No | Description | Beschreibung | Q'ty |
|-----|--|--|------|
| 101 | Screw M5X8 | Schraube M5x8 | 5 |
| 102 | Protecting Cover Of Leadscrew | Leitspindelabdeckung | 1 |
| 103 | Check Ring 14 | Sicherungsring | 2 |
| 104 | Washer | Beilagscheibe | 1 |
| 105 | Small gear | Zahnrad | 2 |
| 106 | key 4 X 8 | Paßfeder | 2 |
| 107 | Change Gear Shaft | Achse | 1 |
| 108 | Screw M4*16 | Schrauben M4*16 | 3 |
| 109 | Adjusting Disc | Haltering | 1 |
| 110 | Shaft Support | Lagerbock | 1 |
| 111 | Taper Pin 6x26 | Zentrierstift 6x26 | 6 |
| 112 | Screw M5x20 | Schraube M5x20 | 10 |
| 113 | Bolt (with shoulder) | Bolzen | 1 |
| 114 | Oil cup 6 | Ölnippel | 3 |
| 115 | Block for switch | Block | 1 |
| 116 | Screw M4x8 | Schrauben M4x8 | 2 |
| 117 | Leadscrew Support (left) | Lagerbock | 1 |
| 118 | Screw M4x8 | Schrauben M4 x 8 | 1 |
| 119 | Round Nut | Rundmutter | 2 |
| 120 | Steel washer | Stahl-Scheibe | 1 |
| 121 | Screw M5x14 | Schrauben M5x14 | 2 |
| 122 | Switch Label | Label | 1 |
| 123 | Shaft Protecting Cover | Schaltergehäuse | 1 |
| 124 | Bed | Maschinenbett | 1 |
| 125 | Nut M6 | Mutter M6 | 2 |
| 126 | Washer 6 | Unterlegscheiben | 2 |
| 127 | Bolt M6x10 | Schraube M6x10 | 2 |
| 128 | Splash guard | Spritzwand | 1 |
| 129 | Screw M8x15 | Schraube M8x15 | 2 |
| 130 | Washer 8 | Unterlegscheibe | 2 |
| 131 | Screw M8x20 | Schraube M8x20 | 1 |
| 132 | Rack | Zahnstange | 1 |
| 133 | Screw M5x12 | Schraube M5x12 | 5 |
| 134 | Leadscrew Support (right) | Lagerbock | 1 |
| 135 | Long Leadscrew | Leitspindel | 1 |
| 136 | Pin 4x25 | Sicherungsstift | 2 |
| 137 | Joint Sleeve of Leadscrew | Hülse | 1 |
| 138 | Joint Shaft of Leadscrew | Achse | 1 |
| 146 | Bolt M12x40 | Schraube M12x40 | 3 |
| 147 | Washer 12 | Unterlegscheibe | 3 |
| 148 | Key 4x16 | Paßfeder 4 x 16 | 1 |
| 154 | Screw M4x16 | Schraube M4x16 | 2 |
| 155 | Protector for Small Gear | Abdeckung | 1 |
| 156 | Green Lamp | Grüne Leuchte | 1 |
| 157 | Fuse Box | Sicherungshalter | 1 |
| 158 | Fuse | Feinisicherung | 1 |
| 159 | Switch for cutting to milling/drilling | Schalter für Dreh- oder Fräsposition | 1 |

Ersatzteilliste C6

| No | Description | Beschreibung | Q'ty |
|-----|--|--------------------------------|------|
| 201 | Screw M5×10 | Schraube M5x10 | 4 |
| 202 | Screw M3×14 | Schraube M3x14 | 4 |
| 203 | Power Switch with emergency stop | Not-Ausschalter | 1 |
| 204 | Screw M5×30 | Schraube M5x30 | 2 |
| 205 | Forward/ Off/ reverse Switch | Lechts-Links-Schalter | 1 |
| 206 | Nut M5 | Mutter M5 | 2 |
| 207 | Washer 5 | Unterlegscheibe | 2 |
| 208 | Electrical Connector | Steckverbinder | 2 |
| 209 | Round Nut M27×1.5 | Ringmutter M27x1.5 | 2 |
| 210 | Spindle Pulley | Spindelkeilriemenscheibe | 1 |
| 211 | Spindle Gear | Zahnrad | 1 |
| 212 | Oil ring | Ölring | 2 |
| 213 | Screw M5×8 | Schraube M5x8 | 3 |
| 214 | Spacer | Distanzring | 1 |
| 215 | Bearing 32007 | Kegelrollenlager | 2 |
| 216 | Spindle Box Cover | Spindelkastendeckel | 1 |
| 217 | Nut M4 | Mutter M4 | 2 |
| 218 | Screw M4×35 | Schraube M4x35 | 2 |
| 219 | Pin Shaft | Paßstift | 1 |
| 220 | Box for Micro Switch | Schalterkasten | 1 |
| 221 | Head Stock Body | Spindelkasten | 1 |
| 222 | Fixing nut | Fixiermutter | 3 |
| 223 | Rotatable Spacer | Bayonettingring | 1 |
| 224 | Key 4×40 | Paßfeder 4x40 | 1 |
| 225 | Spindle | Hauptspindel | 1 |
| 226 | Screw M6×16 | Schraube M6x16 | 3 |
| 227 | Front Bearing Cover | Lagerabdeckung | 1 |
| 228 | Spring Washer 5 | Federring | 3 |
| 229 | Teeth Washer 5 | Zahnring | 3 |
| 230 | Screw M5×16 | Schraube M5x16 | 1 |
| 231 | Spindle Center MT3 | Feste Spitze | 1 |
| 232 | 3-Jaw Chuck D=125mm | Drehfutter | 1 |
| 233 | Check Ring 6 | Ring | 1 |
| 234 | Screw M5×12 | Schraube M5x12 | 4 |
| 235 | Screw M10×25 | Schraube M10x25 | 4 |
| 236 | Screw M5×10 | Schraube M5x10 | 2 |
| 237 | Support | Halter zu Futterschutz | 1 |
| 238 | Limit Block of Dust Bracket | Anschlag zu Futterschutz | 1 |
| 239 | Chuck guard | Spritzschutz | 1 |
| 240 | Fixing Support | Aufnahme zu Futterschutz | 1 |
| 241 | Small Shaft | Achse | 1 |
| 242 | Compress Spring | Feder | 1 |
| 243 | Washer 6 | Unterlegscheibe | 2 |
| 244 | Nut M6 | Mutter M6 | 2 |
| 245 | Plate for switches | Schalterplatte | 1 |
| 246 | Washer 10 | Unterlegscheibe | 4 |
| 247 | Screw M5×8 | Schraube M5x8 | 2 |
| 248 | Microswitch | Microschalter | 1 |
| 249 | 3-Jaw Chuck' Flange | Futterflansch | 1 |

Ersatzteilliste C6

| No | Description | Beschreibung | Q'ty |
|-----|---------------------------------------|-------------------------------|------|
| 250 | Bolt M8x30 | Schrauben M8x30 | 3 |
| 251 | Plug Bolt | Bundbolzen | 3 |
| 252 | Nut M10 | Mutter M10 | 3 |
| 301 | Screw M8x30 | Schraube M8x30 | 2 |
| 302 | Nut | Mutter | 1 |
| 303 | Wahser 12 | Unterlegscheibe | 1 |
| 304 | Nut M12 | Mutter M12 | 1 |
| 305 | Tailstock Body | Reitstockkörper | 1 |
| 306 | Bearing 51101 | Drucklager | 1 |
| 307 | Tailstock Leadscrew | Gewindespindel | 1 |
| 308 | Tailstock Sleeve | Reitstockpinole | 1 |
| 309 | Tubular Clamp | Pinolenklammer | 1 |
| 310 | Washer M8 | Unterlegscheibe | 1 |
| 311 | Clamp bolt | Klemmschraube | 1 |
| 312 | Handle | Handgriff | 1 |
| 313 | Oil Cup | Ölnippel | 2 |
| 314 | T-Tapy Flat Key | Verdrehsicherung | 1 |
| 315 | Screw M6x16 | Schraube M6x16 | 1 |
| 316 | Screw M5x20 | Schraube M5x20 | 4 |
| 317 | Tailstock End Cover | Reitstockdeckel | 1 |
| 318 | Cylinder Pin 4*30 | Spannstift | 1 |
| 319 | Spring Bow | Feder | 1 |
| 320 | Hand Wheel | Handrad | 1 |
| 321 | Handle Bolt | Handgriffschraube | 1 |
| 322 | Handle Sleeve | Handgriff | 1 |
| 323 | Index Ring | Skalenring | 1 |
| 324 | Square Head Bolt M12x100 | Klemmschraube M12x100 | 1 |
| 325 | Tailstock Clamp Plate | Klemmplatte | 1 |
| 326 | Base | Reitstock-Grundplatte | 1 |
| 327 | Zero Position Label | 0-Position Label | 2 |
| 328 | Label Rivet | Nieten | 4 |
| 329 | Indicate Label | 0-Position Label | 1 |
| 330 | Tailstock Center MT2 | Feste Spitze | 1 |
| 401 | Cutter Rest Revolving Disc Base | Drehplatte Unterteil | 1 |
| 402 | Clamp Disc | Drehplatte Oberteil | 1 |
| 403 | Bolt M8*20 | Schraube M8*20 | 2 |
| 404 | Cutter Rest Revolving Disc | Oberschlitten Unterteil | 1 |
| 405 | Cutter Rest Bolt | Spannschraube | 1 |
| 406 | Nut M4 | Mutter M4 | 4 |
| 407 | Screw M4x20 | Schraube M4x20 | 3 |
| 408 | Screw M4x12 | Schraube M4x12 | 1 |
| 409 | Oil Cup 10 | Ölnippel | 1 |
| 410 | Fixing Pin | Verdrehanschlussbolzen | 1 |
| 411 | Square Cutter Rest | 4-Fach-Stahlhalter | 1 |
| 412 | Screw M8x30 | Schraube M8x30 | 8 |
| 413 | Handle | Handgriff | 1 |
| 414 | Handle Base | Handgriffmutter | 1 |

Ersatzteilliste C6

| No | Description | Beschreibung | Q'ty |
|-----|---------------------------------------|------------------------------|------|
| 415 | Washer | Unterlegscheibe | 1 |
| 416 | Spring 0.5×3.5×17 | Feder | 1 |
| 417 | Cutter Rest Carriage | Oberschlitten Oberteil | 1 |
| 418 | Pad Iron Gib | Einstelleiste | 1 |
| 419 | Cylinder Pin 3×10 | Madenschraube 3x10 | 1 |
| 420 | Cutter Rest Carriage Lead Screw | Spindel | 1 |
| 421 | Key 3×10 | Paßfeder | 1 |
| 422 | Oil Cup 6 | Ölnippel | 2 |
| 423 | Leadscrew Support | Spindellager | 1 |
| 424 | Screw M5×16 | Schraube M5x16 | 2 |
| 425 | Spring Plate | Feder | 1 |
| 426 | Handle | Handgriffe | 2 |
| 427 | Nut M8 | Mutter M8 | 1 |
| 428 | Washer 8 | Unterlegscheibe | 1 |
| 429 | Cutter Rest Carriage handwheel | Handrad | 1 |
| 430 | Index Ring | Skalenring | 1 |
| 431 | Screw M6×16 | Schraube M6x16 | 4 |
| 432 | Cylinder Pin 4×16 | Paßstifte | 2 |
| | | | |
| 501 | Hand Wheel | Handrad | 1 |
| 502 | Oil Cup 6 | Ölnippel | 10 |
| 503 | Key 4×12 | Paßfeder | 1 |
| 504 | Roun Nut | Rundmutter | 1 |
| 505 | Screw M3x6 | Schraube M3x6 | 1 |
| 506 | Oil-Stoppong Felt | Abstreifer | 2 |
| 507 | Screw M6x35 | Schraube M6x35 | 4 |
| 508 | Saddle Leadscrew | Querspindel | 1 |
| 509 | Saddle | Support | 1 |
| 510 | Screw M4x12 | Schraube M4x12 | 2 |
| 511 | Clearance-Eliminating Nut | Spindelmutter | 1 |
| 512 | Screw M3x12 | Schraube M3x12 | 8 |
| 513 | Nut M5 | Mutter M5 | 4 |
| 514 | Screw M5x26 | Schraube M5x26 | 4 |
| 515 | Pad Iron Gib | Spannleiste | 1 |
| 516 | Cross Slide | Oberschlitten | 1 |
| 517 | Screw M5x10 | Schraube M5x10 | 1 |
| 518 | Washer | Unterlegscheibe | 1 |
| 519 | Screw M8x10 | Schraube M8x10 | 6 |
| 520 | Rear-Clamp Plate Gib Strip | Spannleiste | 1 |
| 521 | Saddle Rear-Clamp Plate | Klemmleiste | 1 |
| 522 | Screw M4x16 | Schraube M4x16 | 5 |
| 523 | Screw M5x16 | Schrauben M5x16 | 4 |
| 524 | Nut M4 | Mutter M4 | 5 |
| 525 | Screw M8x20 | Schrauben M8x20 | 1 |
| 526 | Screw M5x20 | Schrauben M5x20 | 4 |
| 527 | Oil-Stopping Felt | Abstreifer | 2 |
| 528 | Protecting Panel | Abstreiferdeckel | 2 |
| 529 | Protecting Panel | Abstreiferdeckel | 2 |
| 530 | Saddle Front-Clamp Plate | Führungsplatte mit | 2 |

Ersatzteilliste C6

| No | Description | Beschreibung | Q'ty |
|-----|---------------------------------|--------------------------|------|
| 531 | Braking Plate | Führungsplatte | 1 |
| 532 | Leadscrew Support | Spindellager | 1 |
| 533 | Washer 6 | Unterlegscheibe | 2 |
| 534 | Handle Bolt | Handgriffschraube | 1 |
| 535 | Bolt M6x20 | Schraube M6x20 | 2 |
| 536 | Handle Sleeve | Handgriffhülse | 1 |
| 537 | Bearing 8101 | Drucklager | 1 |
| 538 | Spring Plate | Feder | 1 |
| 539 | Index Ring | Skalenring | 1 |
| 542 | Pin 6*45 | Paßstift | 2 |
| 601 | Handle | Handgriff | 1 |
| 602 | Screw M6x8 | Schraube M6x8 | 1 |
| 603 | Compress Spring | Druckfeder | 1 |
| 604 | Steel Ball 5 | Kugel | 1 |
| 605 | Handle seat | Handgriffsitz | 1 |
| 606 | Screw M6x16 | Schraube M6x16 | 1 |
| 607 | Screw M4x10 | Schraube M4x10 | 6 |
| 608 | Flange Shaft Sleeve | Abdeckplatte | 1 |
| 609 | Apron Body | Support-Vorderteil | 1 |
| 610 | Handle Bolt | Handgriffschraube | 1 |
| 611 | Handle Sleeve | Handgriffhülse | 1 |
| 612 | Hand Wheel | Handrad | 1 |
| 613 | Spring Plate | Feder | 1 |
| 614 | Index Ring | Skalenring | 1 |
| 615 | Small Flange Shaft Sleeve | Abdeckplatte | 1 |
| 616 | Spring Pin 4x30 | Spannstift | 1 |
| 617 | Small Gear Shaft | Zahnradchaft | 1 |
| 618 | Shaft Sleeve | Hülse | 2 |
| 619 | Gear | Zahnrad | 1 |
| 620 | Screw M4x8 | Schraube M4x8 | 2 |
| 621 | Key 5x10 | Paßfeder | 1 |
| 622 | Gear Shaft | Zahnradchaft | 1 |
| 623 | Screw M5x16 | Schraube M5x16 | 4 |
| 624 | Pin 4x22 | Paßstifte | 2 |
| 625 | Nut seat | Mutterführung | 1 |
| 626 | Pin 5x12 | Paßstifte | 1 |
| 627 | Pin 3x20 | Spannstift | 1 |
| 628 | Nut | Mutter | 1 |
| 629 | Slotted Disc | Achsführung | 1 |
| 630 | Rotating Shaft | Achse | 1 |
| 631 | Shaft Sleeve | Führungshülse | 1 |
| 632 | Moving plate | Abdeckplatte | 1 |
| 633 | Screw M4x8 | Schraube M4x8 | 2 |

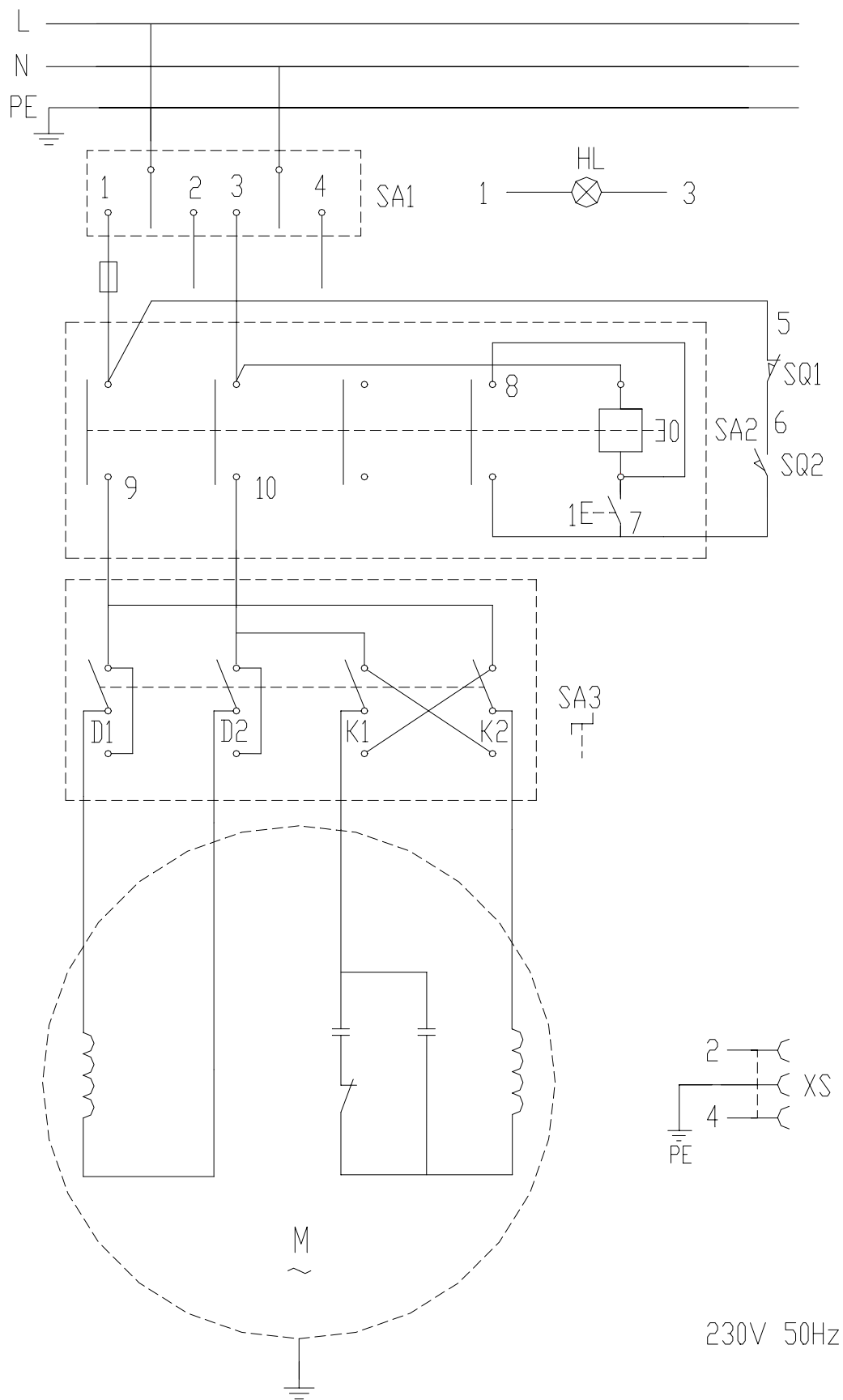
Ersatzteilliste C6

| No | Description | Beschreibung | Q'ty |
|-----|------------------------------|----------------------------|------|
| 801 | Gear Z:75 | Zahnrad | 1 |
| 802 | Gear Z:70 | Zahnrad | 1 |
| 803 | Gear Z:66 | Zahnrad | 2 |
| 804 | Gear Z:60 | Zahnrad | 1 |
| 805 | Gear Z:52 | Zahnrad | 1 |
| 806 | Gear Z:50 | Zahnrad | 1 |
| 807 | Gear Z: 42 | Zahnrad | 1 |
| 808 | Gear Z:40 | Zahnrad | 1 |
| 809 | Gear Z:90 | Zahnrad | 1 |
| 810 | Washer | Unterlegscheibe | 1 |
| 811 | Knurling Bolt | Rändelschraube | 2 |
| 812 | Gear Box Cover | Räderkastenabdeckung | 1 |
| 813 | Gear Z: 25 | Zahnrad | 1 |
| 814 | Screw M5x6 | Schraube M5x6 | 1 |
| 815 | Bolt | Lagerbolzen | 2 |
| 816 | Nut M12 | Mutter | 2 |
| 817 | Oil Cup 6 | Ölnippel | 2 |
| 818 | Gear Z:80 | Zahnrad | 2 |
| 819 | Gear Z:33 | Zahnrad | 1 |
| 820 | Open Washer | Steckscheibe | 2 |
| 821 | Bearing 6001 | Kugellager | 1 |
| 822 | Intermediate Gear Z40 | Zahnrad | 1 |
| 823 | Check Ring 12 | Steckring | 1 |
| 824 | Wahser | Unterlegscheibe | 1 |
| 825 | Fix Shaft Bolt | Schraubbolzen | 1 |
| 826 | Washer | Unterlegscheibe | 1 |
| 827 | Gear Box Support Plate | Getriebeplatte | 1 |
| 828 | Gear Z: 30 | Zahnrad | 1 |
| 829 | Washer 8 | Unterlegscheibe | 6 |
| 830 | Bolt M8x16 | Schraube M8x16 | 6 |
| 831 | Sliding Bearing | Distanzhülse | 2 |
| 832 | Washer | Unterlegscheibe | 2 |
| 833 | Gear Rest | Schwenkarm | 1 |
| 834 | Square Nut | Nutstein | 2 |
| 835 | Screw M6x35 | Schraube M6x35 | 1 |
| 836 | Key 4x16 | Paßfeder | 2 |
| 837 | Screw M4x16 | Schraube M4x16 | 2 |
| 838 | Box of microswitch | Schalterkasten | 1 |
| 839 | Screw M4x30 | Schraube M4x30 | 2 |
| 840 | Nut M4 | Mutter | 4 |
| 841 | Block of moving part | Schalterhebel | 1 |
| 842 | Microswitch | Mikorschalter | 1 |
| 843 | Main Label | Typenschild | 1 |
| 844 | Changing Gear Label | Wechselradtablelle | 1 |

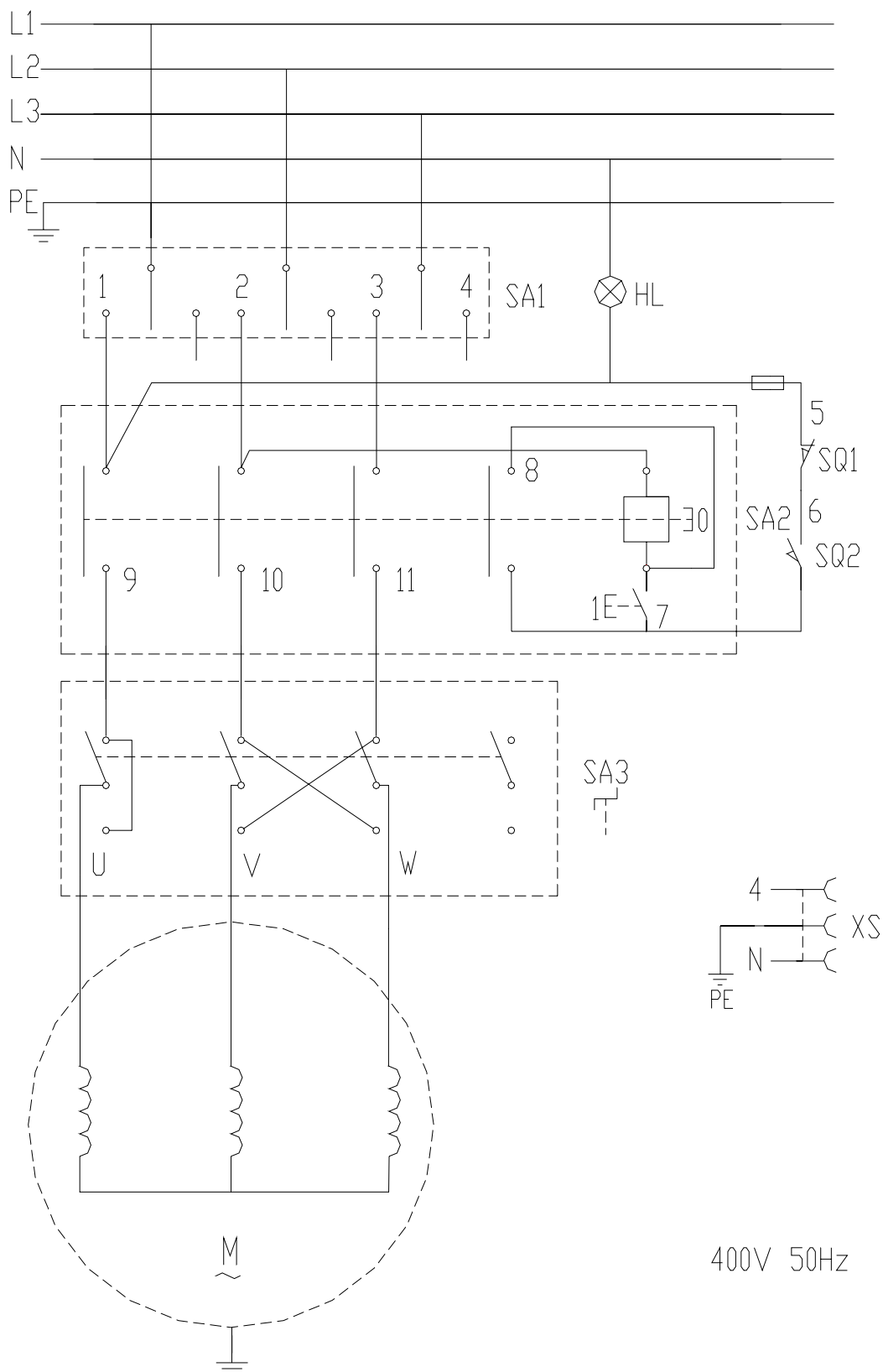
Ersatzteilliste C6

| No | Description | Beschreibung | Q'ty |
|------|-----------------------------------|----------------------------------|------|
| 1501 | Bolt M8x30 | Schraube M8x30 | 4 |
| 1502 | Wahser 8 | Unterlegscheibe | 5 |
| 1503 | AC Motor | Motor | 1 |
| 1504 | Key 5*40 | Paßfeder 5x40 | 1 |
| 1505 | Washer | Führungsscheibe | 1 |
| 1506 | Synchronized Drive Pulley | Zahnriemenrad | 1 |
| 1507 | Washer | Führungsscheibe | 1 |
| 1508 | Motor Pulley | Motorkeilriemenscheibe | 1 |
| 1509 | Check Ring | Unterlegscheibe | 1 |
| 1510 | Screw M6x30 | Schraube M6x30 | 1 |
| 1511 | Oil Cup 6 | Ölnippel | 1 |
| 1512 | Great Washer | Unterlegscheibe | 1 |
| 1513 | Synchronized Counter Pulley | Riemenscheibe | 1 |
| 1514 | Slide Bearing | Lagerhülse | 1 |
| 1515 | Arm Shaft | Führungsbolzen | 1 |
| 1516 | Bearing Arbor | Führungsbolzen | 1 |
| 1517 | Tension Pulley | Spannrolle | 1 |
| 1518 | Bearing 6001 | Kugellager | 2 |
| 1519 | Spacer | Distanzhülse | 1 |
| 1520 | Spring Washer 6 | Federring | 1 |
| 1521 | Check Ring 12 | Distanzring 12 | 3 |
| 1522 | Check Ring 28 | Distanzring 28 | 1 |
| 1523 | Pivot | Achse | 1 |
| 1524 | Washer | Unterlegscheibe | 1 |
| 1525 | Washer 10 | Unterlegscheibe | 3 |
| 1526 | Nut M10 | Mutter | 1 |
| 1527 | Screw M3x14 | Schraube M3x14 | 2 |
| 1528 | Bolt M8x25 | Schraubenbolzen | 1 |
| 1529 | Screw M5x8 | Schraube M5x8 | 4 |
| 1530 | Fan-Support | Schwenksegment | 1 |
| 1531 | Washer | Unterlegscheibe | 1 |
| 1532 | Screw M6x35 | Schraube M6x35 | 1 |
| 1533 | Bolt M10x25 | Schraubbolzen | 2 |
| 1534 | Nut M5 | Mutter | 4 |
| 1535 | Pulley Support | Schwenksegment | 1 |
| 1536 | Motor cover | Motorabdeckung | 1 |
| 1537 | Screw M6x12 | Schraube | 3 |
| 1538 | Nut | Mutter | 2 |
| 1539 | Socket outlet | Abdeckplatte | 1 |
| 1540 | Big Washer 12 | Unterlegscheibe | 1 |
| 1541 | Screw M3x6 | Schraube M3x6 | 4 |
| 1542 | Electric Top Cover | Motorabdeckung | 1 |
| 1543 | Spring Washer 8 | Federring | 4 |
| 1544 | Timing Belt 1.5*124*15 | Zahnriemen | 1 |
| 1545 | V-Belt L=737 | Keilriemen | 1 |
| 1546 | Nut M5 | Mutter | 4 |
| 1547 | Main Power socket outlet | Elektrischer Hauptanschluß | 1 |

Schaltplan C6



Ersatzteilliste C6



ARTEC
Maschinen Vertriebs GmbH
Hauswiesenstraße 24
86916 Kaufering

☎ 08191 / 65461

☎ 08191 / 65464

CE Konformitätserklärung

Certificate of Compliance

gemäß

EG Maschinenrichtlinie 93/68/EWG
EMV Richtlinie 89/336/EWG

according to

Directive 93/68/EC

Directive 89/336/EC

Hiermit erklären wir, daß die nachfolgend bezeichnete Maschine aufgrund ihrer Konzipierung und Bauart sowie in der von uns in Verkehr gebrachten Ausführung den einschlägigen, grundlegenden Sicherheits und Gesundheitsanforderungen der EG Richtlinie entspricht. Bei einer nicht mit uns abgestimmten Änderung der Maschine verliert diese Erklärung ihre Gültigkeit.

We hereby declair that the following machine meets the essential safety and health requireinents set out in the EC directive. Any unauthorized changes of the machine by us cause losing of the certifi-cate validity.

Bezeichnung der Maschine:

Drehmaschine

Product:

bench lathe

Maschinentype:

C6 x 400; C6 x 550

Type

Maschinen Nr.:

.....

Number of machine

Baujahr:

.....

Year of manufacture:

Angewandte harmonisierte Normen:

EN55014-1: 2000; EN55014-2: 1997

EN61000-3-2: 2000; EN61000-3-3: 1995

Applied harmonized European standards:

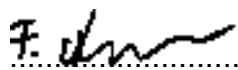
Ort / Datum:

Kaufering, 13.08.2002

Date

Unterschrift

Signature



Frank Artinger
Geschäftsführer

ARTEC
Maschinen-Vertriebs GmbH
Hauswiesenstraße 24
86916 Kaufering

Tel.: 08191 - 65461
Fax: 08191 - 65464
e-mail: info@ar-tec.de