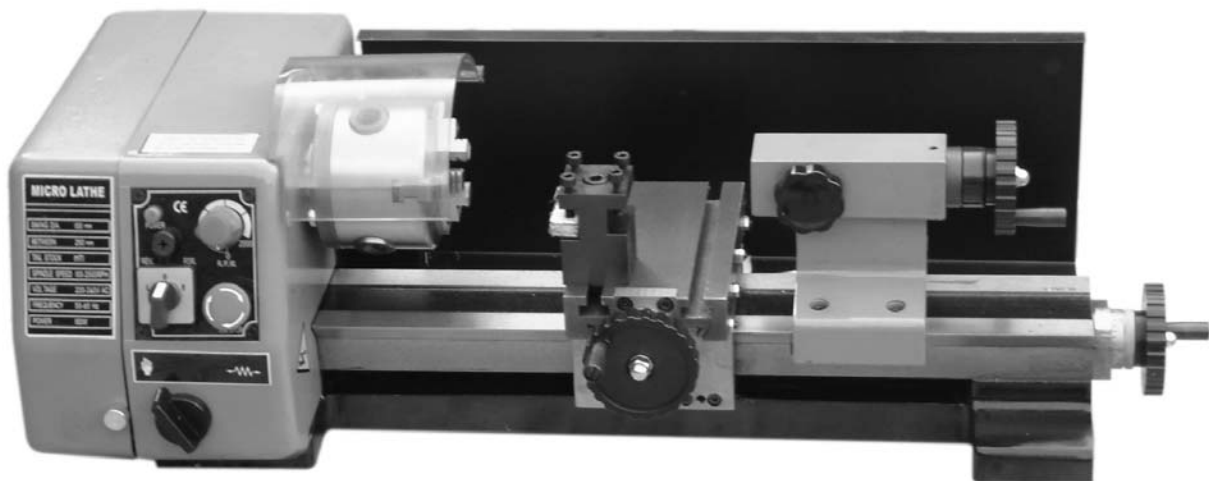
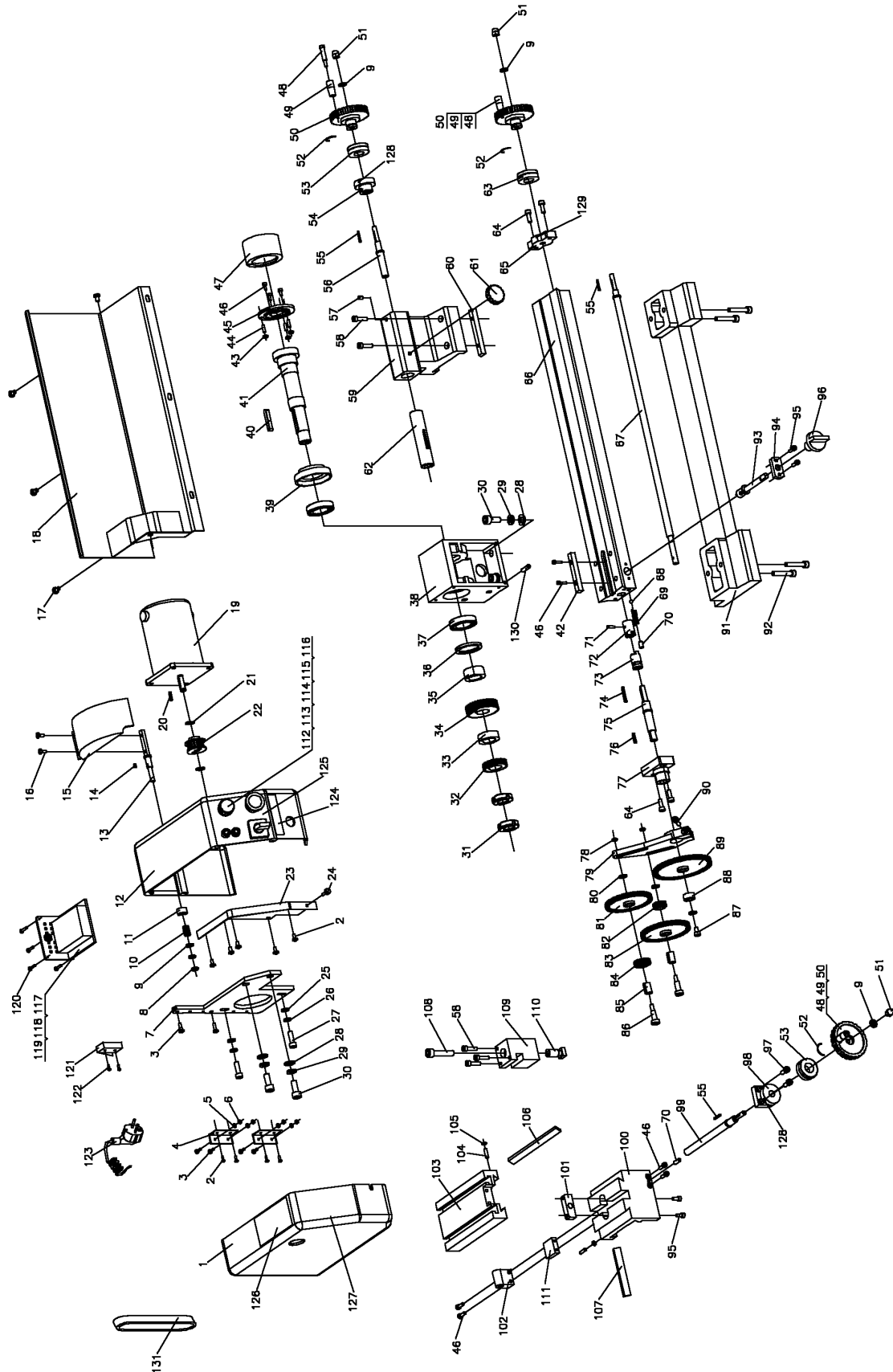

Bedienungsanleitung

Leitspindeldrehmaschine



C1

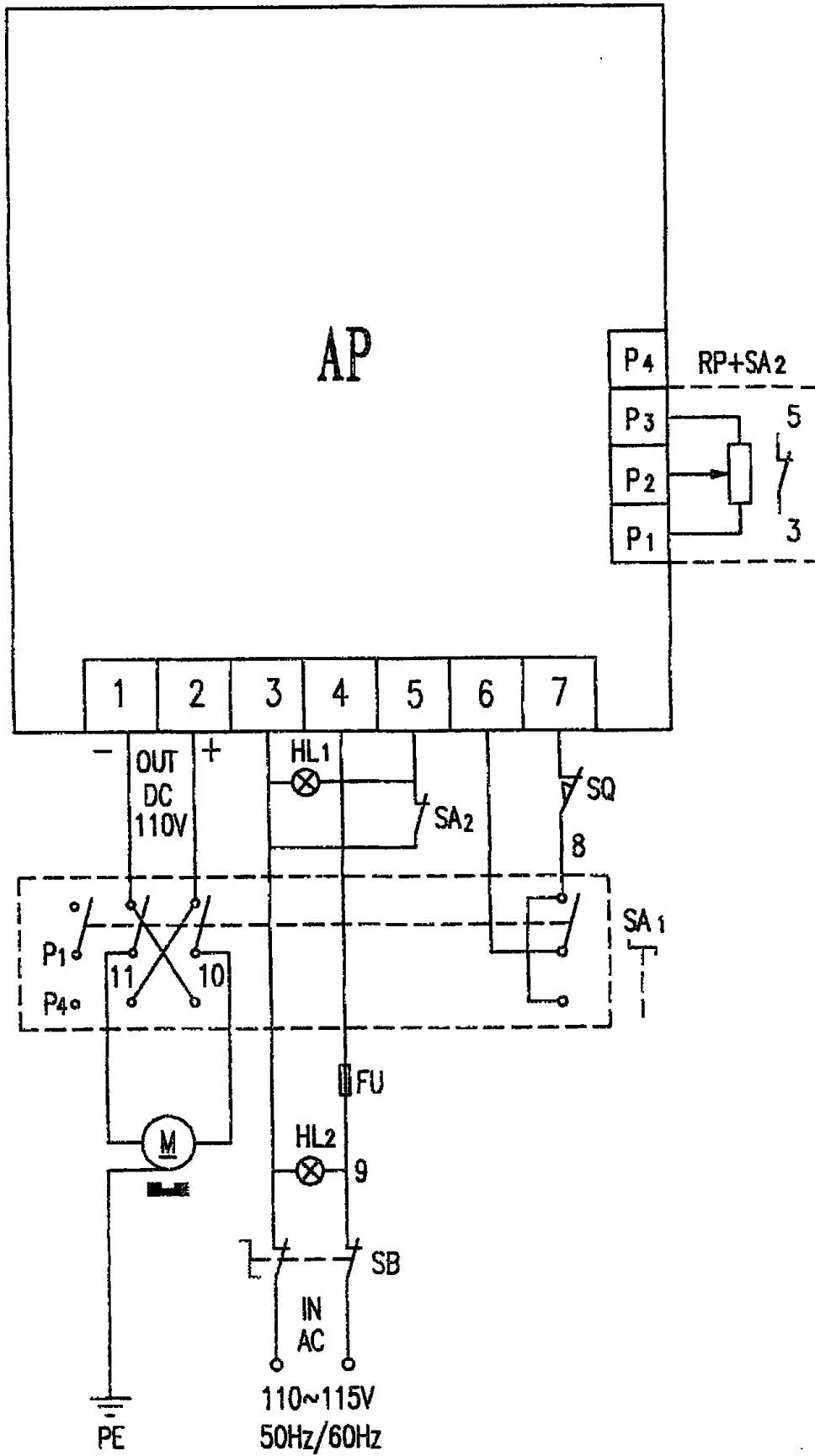
Ersatzteilliste



Bedienungsanleitung C1

No.	Description	Q'ty			
1	Change gear cover	1	56	Tailstock screw	1
2	Cap Screw GB818, M4*8	9	57	Screw M5*8	1
3	Cap Screw GB818, M4*12	6	58	Screw M5*20	5
4	Hinge L*B=38*31	2	59	Tailstock casting	1
5	Washer 4	4	60	Wedge	1
6	Nut M4	4	61	Lock handle	1
7	Cantilever	1	62	Tailstock quill	1
8	Nut M6	2	63	Dial	1
9	Washer 6	4	64	Screw M5*14	4
10	Compression spring	1	65	Screw bracket	1
11	Spacing ring	1	66	Bed lead rail	1
12	Cover for Spindle box	1	67	Leadscrew	1
13	Rotate spindle	1	68	Steel ball 5	1
14	Key 3*6	1	69	Compression spring	1
15	Protect cover for chuck	1	70	Screw M6*10	2
16	Cap screw M4*8	2	71	Pin 3*14	1
17	Cap screw M5*8	4	72	Clutch bracket	1
18	Rear splash guard	1	73	Clutch	1
19	Motor	1	74	Key 3*22	1
20	Key 3*16	1	75	Shaft	1
21	Check ring 8	2	76	Key 3*14	1
22	Timing pulley	1	77	Gear shaft bracket	1
23	Support plate	1	78	Nut M5	2
24	Screw M4*8	1	79	Support plate	1
25	Washer 6	2	80	Washer	3
26	Spring washer 6	2	81	Change gear Z=72	1
27	Screw M6*20	2	82	Change gear Z=19	1
28	Washer 8	6	83	Change gear Z=76	1
29	Spring washer 8	6	84	Change gear Z=24	1
30	Screw M8*20	6	85	Gear sleeve	2
31	Small round nut M18*1.5	2	86	Gear shaft	2
32	Spindle gear	1	87	Screw M5*8	4
33	Spacing ring (I)	1	88	Spacing ring	1
34	Spindle timing pulley	1	89	Change gear Z=90	1
35	Spacing ring (II)	1	90	Screw M5*25	1
36	Behind oil seal(ring)	1	91	Bed base	1
37	Bearing 30205	2	92	Screw M6*35	4
38	Spindle box	1	93	Unplug shaft	1
39	Front oil seal(ring)	1	94	Dam-board	1
40	Key 6*36	1	95	Screw M4*10	4
41	Spindle	1	96	Clutch rotate knob	1
42	Key	1	97	Screw M5*12	2
43	Nut M6	3	98	Leadscrew bracket	1
44	Screw M6*25	3	99	Cross slide screw	1
45	Chuck flange	1	100	Saddle	1
46	Round cap screw M4*12	9	101	Cross slide nut	1
47	80mm 3-jaw chuck	1	102	Leadscrew nut	1
48	Handle screw	3	103	Cross slide	1
49	Rotate small handle	3	104	Screw M4*16	7
50	Handwheel	3	105	Nut M4	7
51	Cap nut M6	3	106	Cross slide wedge	1
52	Spring steel	3	107	Gib strip	1
53	Dial	2	108	Screw M8*40	1
54	Screw base	1	109	Tool rest	1
55	Key 2*18	3	110	Tool rest shaft	1
			111	Connect block	1
			112	Potentiometer	1
			113	Emergency stop switch	1
			114	Forward/off/Reverse switch	1
			115	Power indicator light	1
			116	Fuse box	1
			117	PC board	1
			118	Lock connect	1
			119	PC board box	1
			120	Screw ST2.9*10	4
			121	Micro switch	1
			122	Screw ST1.9*10	2
			123	Power cord with plug	1
			124	Operate change label	1
			125	Switch label	1
			126	Change gear label	1
			127	Main label	1
			128	Scale label (I)	2
			129	Scale label (II)	1
			130	Screw M5*12	4
			131	Timing belt	1
			200	L Hex wrench 2,3,4,6mm	1
			201	Double end wrench: 5.5*7; 8*10	1
			202	Socket head wrench 28*32	1
			204	Center MT1	1
			205	Oil can	1
			208	Fuse	1

Bedienungsanleitung C1



ARTEC

Maschinen-Vertriebs GmbH
Hauswiesenstraße 24
86916 Kaufering

Tel.: 08191 - 65461

Fax: 08191 - 65464